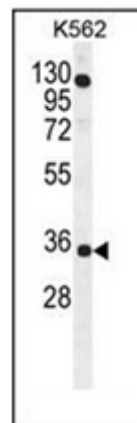


Polyclonal Antibody to C1orf56 (N-term) - Aff - Purified

Alternate names:	Uncharacterized protein
Catalog No.:	AP50551PU-N
Quantity:	0.1 mg
Concentration:	0.25 mg/ml
Uniprot ID:	Q9BUN1
NCBI:	NP_060330
GeneID:	54964
Host / Isotype:	Rabbit / Ig
Immunogen:	KLH conjugated synthetic peptide between 31-60 amino acids from the N-terminal region of human C1orf56
Format:	State: Liquid purified Ig fraction Purification: Protein A column, followed by peptide affinity purification Buffer System: PBS containing 0.09% (W/V) Sodium Azide as preservative
Applications:	ELISA: 1/1000. Western blotting: 1/100-1/500. Flow Cytometry: 1/10-1/50. Other applications not tested. Optimal dilutions are dependent on conditions and should be determined by the user.
Specificity:	This antibody recognizes Human C1orf56 (N-term)
Species Reactivity:	Tested: Human.
Add. Information:	Molecular Weight: 36769 Da
Storage:	Store undiluted at 2-8°C for one month or (in aliquots) at -20°C for longer. Avoid repeated freezing and thawing. Shelf life: one year from despatch.
General Readings:	Clark, H.F., et al. Genome Res. 13(10):2265-2270(2003)

Pictures:

Western blot analysis of C1orf56 Antibody (N-term) Cat.-No AP50551PU-N in K562 cell line lysates (35ug/lane). This demonstrates the C1orf56 antibody detected the C1orf56 protein (arrow).



Flow cytometric analysis of K562 cells using C1orf56 Antibody (N-term) Cat.-No AP50551PU-N (right histogram) compared to a negative control cell (left histogram). FITC-conjugated goat-anti-rabbit secondary antibodies were used for the analysis.

