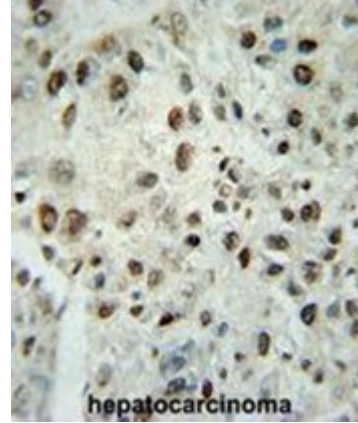


Polyclonal Antibody to C1orf53 (C-term) - Aff - Purified

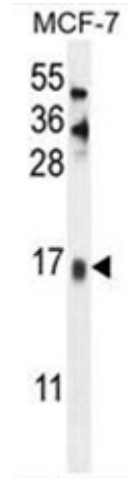
Alternate names:	Uncharacterized protein
Catalog No.:	AP50550PU-N
Quantity:	0.1 mg
Concentration:	0.25 mg/ml
Uniprot ID:	Q5VUE5
NCBI:	NP_001019765
GeneID:	388722
Host / Isotype:	Rabbit / Ig
Immunogen:	KLH conjugated synthetic peptide between 123-153 amino acids from the C-terminal region of human C1orf53
Format:	State: Liquid purified Ig fraction Purification: Affinity chromatography on Protein A Buffer System: PBS containing 0.09% (W/V) sodium azide as preservative
Applications:	ELISA: 1/1000. Western blotting: 1/100 - 1/500. Immunohistochemistry on paraffin sections: 1/50 - 1/100. Flow Cytometry: 1/10 - 1/50. Other applications not tested. Optimal dilutions are dependent on conditions and should be determined by the user.
Specificity:	This antibody reacts to C1orf53.
Species Reactivity:	Tested: Human.
Add. Information:	Molecular Weight: 15483 Da
Storage:	Store the antibody undiluted at 2-8°C for one month or (in aliquots) at -20°C for longer. Avoid repeated freezing and thawing. Shelf life: one year from despatch.
General Readings:	Corson, T.W., et al. Oncogene 24(30):4741-4753(2005)

Pictures:

C1orf53 Antibody (C-term) (Cat. #AP50550PU-N) immunohistochemistry analysis in formalin fixed and paraffin embedded human hepatocarcinoma followed by peroxidase conjugation of the secondary antibody and DAB staining. This data demonstrates the use of the C1orf53 Antibody (C-term) for immunohistochemistry. Clinical relevance has not been evaluated.



C1orf53 Antibody (C-term) (Cat. #AP50550PU-N) western blot analysis in MCF-7 cell line lysates (35µg/lane). This demonstrates the C1orf53 antibody detected the C1orf53 protein (arrow).



C1orf53 Antibody (C-term) (Cat. #AP50550PU-N) flow cytometric analysis of MCF-7 cells (right histogram) compared to a negative control cell (left histogram). FITC-conjugated goat-anti-rabbit secondary antibodies were used for the analysis.

