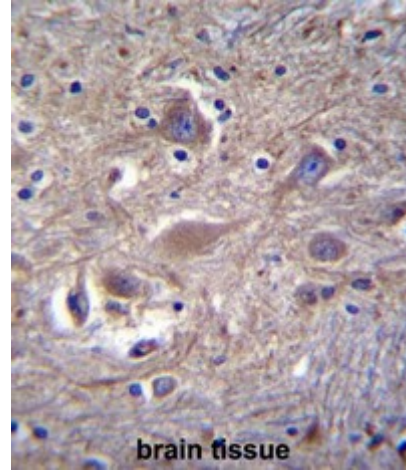


Polyclonal Antibody to C1orf227 (Center) - Aff - Purified

Alternate names:	UPF0732 protein
Catalog No.:	AP50546PU-N
Quantity:	0.1 mg
Concentration:	0.25 mg/ml
Uniprot ID:	Q537H7
NCBI:	NP_001019772
GeneID:	149643
Host / Isotype:	Rabbit / Ig
Immunogen:	KLH conjugated synthetic peptide between 28-57 amino acids from the Central region of human C1orf227
Format:	State: Liquid purified Ig fraction Purification: Affinity chromatography on Protein A Buffer System: PBS containing 0.09% (W/V) sodium azide as preservative
Applications:	ELISA: 1/1000. Western blotting: 1/100 - 1/500. Immunohistochemistry on paraffin sections: 1/10 - 1/50. Other applications not tested. Optimal dilutions are dependent on conditions and should be determined by the user.
Specificity:	This antibody reacts to C1orf227.
Species Reactivity:	Tested: Human.
Add. Information:	Molecular Weight: 11356 Da
Storage:	Store the antibody undiluted at 2-8°C for one month or (in aliquots) at -20°C for longer. Avoid repeated freezing and thawing. Shelf life: one year from despatch.
General Readings:	Rose, J. Phd, et al. Mol. Med. (2010)

Pictures:

C1orf227 Antibody (Center) (Cat. #AP50546PU-N) immunohistochemistry analysis in formalin fixed and paraffin embedded human brain tissue followed by peroxidase conjugation of the secondary antibody and DAB staining. This data demonstrates the use of C1orf227 Antibody (Center) for immunohistochemistry. Clinical relevance has not been evaluated.



C1orf227 Antibody (Center) (Cat. #AP50546PU-N) western blot analysis in MDA-MB231, NCI-H292, NCI-H460, HepG2 cell line lysates (35µg/lane). This demonstrates the C1orf227 antibody detected the C1orf227 protein (arrow).

