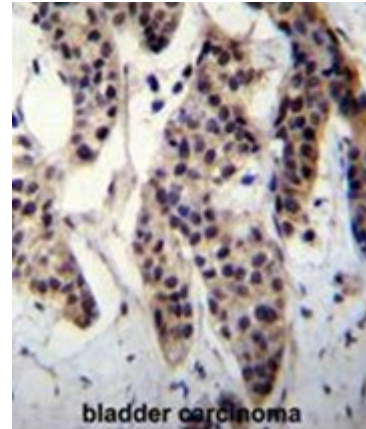


Polyclonal Antibody to C1orf162 (Center) - Aff - Purified

Alternate names:	Transmembrane protein
Catalog No.:	AP50536PU-N
Quantity:	0.1 mg
Concentration:	0.25 mg/ml
Uniprot ID:	Q8NEQ5
NCBI:	NP_777556
GeneID:	128346
Host / Isotype:	Rabbit / Ig
Immunogen:	KLH conjugated synthetic peptide between 85-114 amino acids from the Central region of human C1orf162
Format:	State: Liquid purified Ig fraction Purification: Affinity chromatography on Protein A Buffer System: PBS containing 0.09% (W/V) sodium azide as preservative
Applications:	ELISA: 1/1000. Western blotting: 1/100 - 1/500. Immunohistochemistry on paraffin sections: 1/10 - 1/50. Other applications not tested. Optimal dilutions are dependent on conditions and should be determined by the user.
Specificity:	This antibody reacts to C1orf162.
Species Reactivity:	Tested: Human.
Add. Information:	Molecular Weight: 16886 Da
Storage:	Store the antibody undiluted at 2-8°C for one month or (in aliquots) at -20°C for longer. Avoid repeated freezing and thawing. Shelf life: one year from despatch.
General Readings:	1. Ota, T., et al. Nat. Genet. 36(1):40-45(2004) 2. Strausberg, R.L., et al. Proc. Natl. Acad. Sci. U.S.A. 99(26):16899-16903(2002)

Pictures:

C1orf162 Antibody (Center) (Cat. #AP50536PU-N) immunohistochemistry analysis in formalin fixed and paraffin embedded human bladder carcinoma followed by peroxidase conjugation of the secondary antibody and DAB staining. This data demonstrates the use of C1orf162 Antibody (Center) for immunohistochemistry. Clinical relevance has not been evaluated.



C1orf162 Antibody (Center) (Cat. #AP50536PU-N) western blot analysis in Jurkat cell line lysates (35µg/lane). This demonstrates the C1orf162 antibody detected the C1orf162 protein (arrow).

