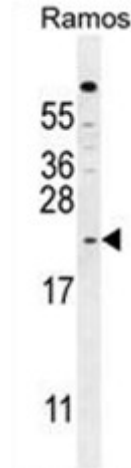


## Polyclonal Antibody to C1orf100 (C-term) - Aff - Purified

<b>Alternate names:</b>	Uncharacterized protein
<b>Catalog No.:</b>	AP50525PU-N
<b>Quantity:</b>	0.1 mg
<b>Concentration:</b>	0.25 mg/ml
<b>Uniprot ID:</b>	<a href="#">Q5SVI3</a>
<b>NCBI:</b>	<a href="#">NP_001012988</a>
<b>GeneID:</b>	<a href="#">200159</a>
<b>Host / Isotype:</b>	Rabbit / Ig
<b>Immunogen:</b>	KLH conjugated synthetic peptide between 120-151 amino acids from the C-terminal region of human C1orf100
<b>Format:</b>	<b>State:</b> Liquid purified Ig fraction <b>Purification:</b> Affinity chromatography on Protein A <b>Buffer System:</b> PBS containing 0.09% (W/V) sodium azide as preservative
<b>Applications:</b>	<b>ELISA:</b> 1/1000. <b>Western blotting:</b> 1/100 - 1/500. <b>Flow Cytometry:</b> 1/10 - 1/50. Other applications not tested. Optimal dilutions are dependent on conditions and should be determined by the user.
<b>Specificity:</b>	This antibody reacts to C1orf100.
<b>Species Reactivity:</b>	<b>Tested:</b> Human.
<b>Add. Information:</b>	<b>Molecular Weight:</b> 17617 Da
<b>Storage:</b>	Store the antibody undiluted at 2-8°C for one month or (in aliquots) at -20°C for longer. Avoid repeated freezing and thawing. Shelf life: one year from despatch.
<b>General Readings:</b>	Gregory, S.G., et al. Nature 441(7091):315-321(2006)

**Pictures:**

C1orf100 Antibody (C-term) (Cat. #AP50525PU-N) western blot analysis in Ramos cell line lysates (35µg/lane). This demonstrates the C1orf100 antibody detected the C1orf100 protein (arrow).



C1orf100 Antibody (C-term) (Cat. #AP50525PU-N) flow cytometric analysis of Ramos cells (right histogram) compared to a negative control cell (left histogram). FITC-conjugated goat-anti-rabbit secondary antibodies were used for the analysis.

