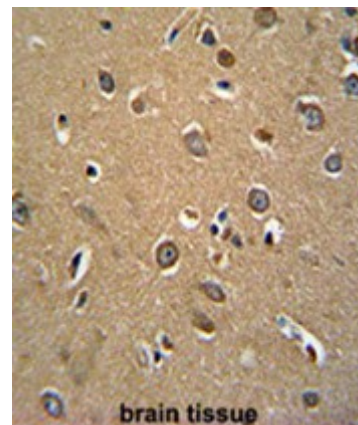


Polyclonal Antibody to C17orf56 (Center) - Aff - Purified

Catalog No.:	AP50495PU-N
Quantity:	0.1 mg
Concentration:	0.25 mg/ml
Uniprot ID:	Q96N21
NCBI:	NP_653280
GeneID:	146705
Host / Isotype:	Rabbit / Ig
Immunogen:	KLH conjugated synthetic peptide between 158-187 amino acids from the Central region of human C17orf56
Format:	State: Liquid purified Ig fraction Purification: Affinity chromatography on Protein A Buffer System: PBS containing 0.09% (W/V) sodium azide as preservative
Applications:	ELISA: 1/1000. Western blotting: 1/100 - 1/500. Immunohistochemistry on paraffin sections: 1/50 - 1/100. Other applications not tested. Optimal dilutions are dependent on conditions and should be determined by the user.
Specificity:	This antibody reacts to C17orf56.
Species Reactivity:	Tested: Human.
Add. Information:	Molecular Weight: 55137 Da
Storage:	Store the antibody undiluted at 2-8°C for one month or (in aliquots) at -20°C for longer. Avoid repeated freezing and thawing. Shelf life: one year from despatch.
Pictures:	C17orf56 antibody (Center) (Cat. #AP50495PU-N) immunohistochemistry analysis in formalin fixed and paraffin embedded human brain tissue followed by peroxidase conjugation of the secondary antibody and DAB staining. This data demonstrates the use of the C17orf56 antibody (Center) for immunohistochemistry. Clinical relevance has not been evaluated.



C17orf56 Antibody (Center) (Cat. #AP50495PU-N) western blot analysis in A2058 cell line lysates (35µg/lane). This demonstrates the C17orf56 antibody detected the C17orf56 protein (arrow).

