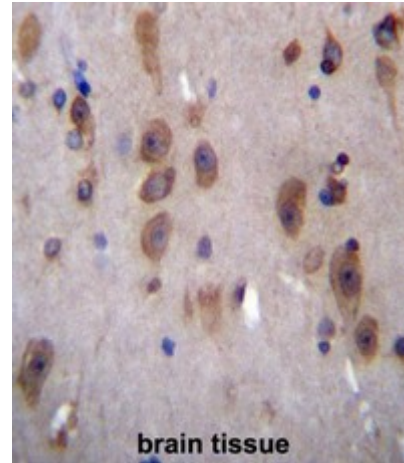


Polyclonal Antibody to C16orf11 (N-term) - Aff - Purified

Alternate names:	Uncharacterized protein RJD1
Catalog No.:	AP50483PU-N
Quantity:	0.1 mg
Concentration:	0.25 mg/ml
Uniprot ID:	Q96S23
NCBI:	NP_660313
GeneID:	283948
Host / Isotype:	Rabbit / Ig
Immunogen:	KLH conjugated synthetic peptide between 74-95 amino acids from the N-terminal region of human C16orf11
Format:	State: Liquid purified Ig fraction Purification: Affinity chromatography on Protein A Buffer System: PBS containing 0.09% (W/V) sodium azide as preservative
Applications:	ELISA: 1/1000. Western blotting: 1/100 - 1/500. Immunohistochemistry on paraffin sections: 1/10 - 1/50. Other applications not tested. Optimal dilutions are dependent on conditions and should be determined by the user.
Specificity:	This antibody reacts to C16orf11.
Species Reactivity:	Tested: Human.
Add. Information:	Molecular Weight: 59;354 Da
Storage:	Store the antibody undiluted at 2-8°C for one month or (in aliquots) at -20°C for longer. Avoid repeated freezing and thawing. Shelf life: one year from despatch.
General Readings:	Martin, J., et al. Nature 432(7020):988-994(2004)

Pictures:

C16orf11 Antibody (N-term) (Cat. #AP50483PU-N) immunohistochemistry analysis in formalin fixed and paraffin embedded human brain tissue followed by peroxidase conjugation of the secondary antibody and DAB staining. This data demonstrates the use of C16orf11 Antibody (N-term) for immunohistochemistry. Clinical relevance has not been evaluated.



C16orf11 Antibody (N-term) (Cat. #AP50483PU-N) western blot analysis in HepG2 cell line lysates (35µg/lane). This demonstrates the C16orf11 antibody detected the C16orf11 protein (arrow).

