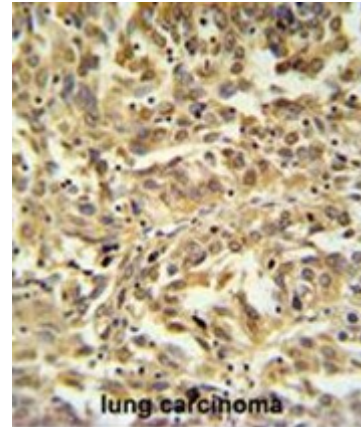


Polyclonal Antibody to C15orf57 (N-term) - Aff - Purified

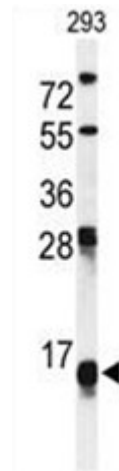
Alternate names:	CCDC32, Protein CCDC32, Uncharacterized protein
Catalog No.:	AP50481PU-N
Quantity:	0.1 mg
Concentration:	0.25 mg/ml
Uniprot ID:	Q9BV29
NCBI:	NP_001074260
GeneID:	90416
Host / Isotype:	Rabbit / Ig
Immunogen:	KLH conjugated synthetic peptide between 152~181 amino acids from the N-terminal region of human C15orf57
Format:	State: Liquid purified Ig fraction Purification: Affinity chromatography on Protein A Buffer System: PBS containing 0.09% (W/V) sodium azide as preservative
Applications:	ELISA: 1/1000. Western blotting: 1/100 - 1/500. Immunohistochemistry on paraffin sections: 1/50 - 1/100. Flow Cytometry: 1/10 - 1/50. Other applications not tested. Optimal dilutions are dependent on conditions and should be determined by the user.
Specificity:	This antibody reacts to C15orf57.
Species Reactivity:	Tested: Human.
Add. Information:	Molecular Weight: 20656 Da
Storage:	Store the antibody undiluted at 2-8°C for one month or (in aliquots) at -20°C for longer. Avoid repeated freezing and thawing. Shelf life: one year from despatch.
General Readings:	Suzuki, Y., et al. Genome Res. 14(9):1711-1718(2004)

Pictures:

C15orf57 Antibody (N-term)(Cat. #AP50481PU-N) IHC analysis in formalin fixed and paraffin embedded lung carcinoma followed by peroxidase conjugation of the secondary antibody and DAB staining. This data demonstrates the use of the C15orf57 Antibody (N-term) for immunohistochemistry. Clinical relevance has not been evaluated.



Western blot analysis of C15orf57 Antibody (N-term) (Cat. #AP50481PU-N) in 293 cell line lysates (35µg/lane). C15orf57 (arrow) was detected using the purified Pab



C15orf57 Antibody (N-term) (Cat. #AP50481PU-N) flow cytometric analysis of 293 cells (right histogram) compared to a negative control cell (left histogram). FITC-conjugated goat-anti-rabbit secondary antibodies were used for the analysis

