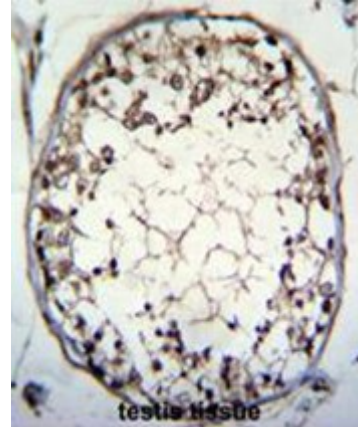


Polyclonal Antibody to C15orf43 (Center) - Aff - Purified

Alternate names:	Uncharacterized protein
Catalog No.:	AP50478PU-N
Quantity:	0.1 mg
Concentration:	0.25 mg/ml
Uniprot ID:	Q8NHR7
NCBI:	NP_689661
GeneID:	145645
Host / Isotype:	Rabbit / Ig
Immunogen:	KLH conjugated synthetic peptide between 131-161 amino acids from the Central region of human C15orf43
Format:	State: Liquid purified Ig fraction Purification: Affinity chromatography on Protein A Buffer System: PBS containing 0.09% (W/V) sodium azide as preservative
Applications:	ELISA: 1/1000. Western blotting: 1/100 - 1/500. Immunohistochemistry on paraffin sections: 1/50 - 1/100. Other applications not tested. Optimal dilutions are dependent on conditions and should be determined by the user.
Specificity:	This antibody reacts to C15orf43.
Species Reactivity:	Tested: Human.
Add. Information:	Molecular Weight: 25316 Da
Storage:	Store the antibody undiluted at 2-8°C for one month or (in aliquots) at -20°C for longer. Avoid repeated freezing and thawing. Shelf life: one year from despatch.
General Readings:	Gerhard, D.S., et al. Genome Res. 14 (10B), 2121-2127 (2004)

Pictures:

C15orf43 Antibody (Center) (Cat. #AP50478PU-N) immunohistochemistry analysis in formalin fixed and paraffin embedded human testis tissue followed by peroxidase conjugation of the secondary antibody and DAB staining. This data demonstrates the use of C15orf43 Antibody (Center) for immunohistochemistry. Clinical relevance has not been evaluated.



C15orf43 Antibody (Center) (Cat. #AP50478PU-N) western blot analysis in K562 cell line lysates (35µg/lane). This demonstrates the C15orf43 antibody detected the C15orf43 protein (arrow).

