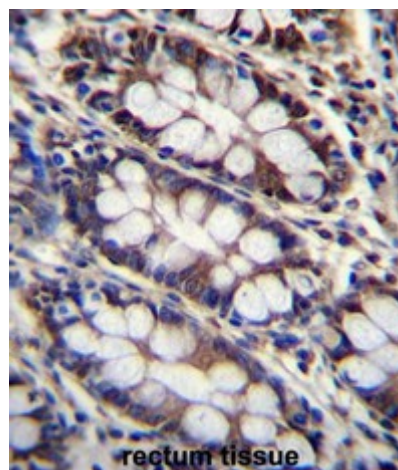


Polyclonal Antibody to C13orf16 (C-term) - Aff - Purified

Alternate names:	Uncharacterized protein
Catalog No.:	AP50456PU-N
Quantity:	0.1 mg
Concentration:	0.25 mg/ml
Uniprot ID:	Q8N6K0
NCBI:	NP_689537
GeneID:	121793
Host / Isotype:	Rabbit / Ig
Immunogen:	KLH conjugated synthetic peptide between 120-151 amino acids from the C-terminal region of human C13orf16
Format:	State: Liquid purified Ig fraction Purification: Affinity chromatography on Protein A Buffer System: PBS containing 0.09% (W/V) sodium azide as preservative
Applications:	ELISA: 1/1000. Western blotting: 1/100 - 1/500. Immunohistochemistry on paraffin sections: 1/10 - 1/50. Other applications not tested. Optimal dilutions are dependent on conditions and should be determined by the user.
Specificity:	This antibody reacts to C13orf16.
Species Reactivity:	Tested: Human.
Add. Information:	Molecular Weight: 16649 Da
Storage:	Store the antibody undiluted at 2-8°C for one month or (in aliquots) at -20°C for longer. Avoid repeated freezing and thawing. Shelf life: one year from despatch.
General Readings:	1. Trynka, G., et al. Gut 58(8):1078-1083(2009) 2. Stolk, L., et al. Nat. Genet. 41(6):645-647(2009) 3. Lamesch, P., et al. Genomics 89(3):307-315(2007) 4. Dunham, A., et al. Nature 428(6982):522-528(2004)

Pictures:

C13orf16 Antibody (C-term) (Cat. #AP50456PU-N) immunohistochemistry analysis in formalin fixed and paraffin embedded human rectum tissue followed by peroxidase conjugation of the secondary antibody and DAB staining. This data demonstrates the use of C13orf16 Antibody (C-term) for immunohistochemistry. Clinical relevance has not been evaluated.



C13orf16 Antibody (C-term) (Cat. #AP50456PU-N) western blot analysis in Y79 cell line lysates (35µg/lane). This demonstrates the C13orf16 antibody detected the C13orf16 protein (arrow).

