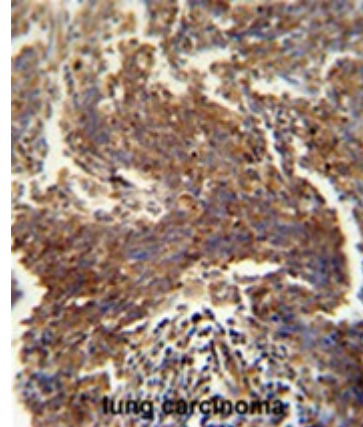


Polyclonal Antibody to C11orf66 (Center) - Aff - Purified

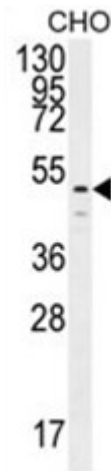
Alternate names:	Uncharacterized protein
Catalog No.:	AP50436PU-N
Quantity:	0.1 mg
Concentration:	0.25 mg/ml
Uniprot ID:	Q7Z5V6
NCBI:	NP_001164224
GeneID:	220004
Host / Isotype:	Rabbit / Ig
Immunogen:	KLH conjugated synthetic peptide between 251-281 amino acids from the Central region of human C11orf66
Format:	State: Liquid purified Ig fraction Purification: Affinity chromatography on Protein A Buffer System: PBS containing 0.09% (W/V) sodium azide as preservative
Applications:	ELISA: 1/1000. Western blotting: 1/100 - 1/500. Immunohistochemistry on paraffin sections: 1/50 - 1/100. Other applications not tested. Optimal dilutions are dependent on conditions and should be determined by the user.
Specificity:	This antibody reacts to C11orf66.
Species Reactivity:	Tested: Human, Mouse and Hamster.
Add. Information:	Molecular Weight: 47295 Da
Storage:	Store the antibody undiluted at 2-8°C for one month or (in aliquots) at -20°C for longer. Avoid repeated freezing and thawing. Shelf life: one year from despatch.
General Readings:	Danielson, P.E., et al. Brain Res. Gene Expr. Patterns 1(2):83-88(2002)

Pictures:

C11orf66 antibody (Center) (Cat. #AP50436PU-N) immunohistochemistry analysis in formalin fixed and paraffin embedded human lung carcinoma followed by peroxidase conjugation of the secondary antibody and DAB staining. This data demonstrates the use of the C11orf66 antibody (Center) for immunohistochemistry. Clinical relevance has not been evaluated.



C11orf66 Antibody (Center) (Cat. #AP50436PU-N) western blot analysis in mouse CHO cell line lysates (35µg/lane). This demonstrates the C11orf66 antibody detected the C11orf66 protein (arrow).



C11orf66 Antibody (Center) (Cat. #AP50436PU-N) western blot analysis in mouse testis tissue lysates (35µg/lane). This demonstrates the C11orf66 antibody detected the C11orf66 protein (arrow).

