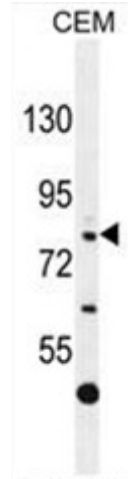


Polyclonal Antibody to C11orf63 (C-term) - Aff - Purified

| | |
|----------------------------|---|
| Alternate names: | Uncharacterized protein |
| Catalog No.: | AP50435PU-N |
| Quantity: | 0.1 mg |
| Concentration: | 0.25 mg/ml |
| Uniprot ID: | Q6NUN7 |
| NCBI: | NP_079082 |
| GeneID: | 79864 |
| Host / Isotype: | Rabbit / Ig |
| Immunogen: | KLH conjugated synthetic peptide between 666-696 amino acids from the C-terminal region of human C11orf63 |
| Format: | Buffer System: Purified polyclonal antibody supplied in PBS with 0.09% (W/V) sodium azide. This antibody is purified through a protein A column; followed by peptide affinity purification. |
| Applications: | ELISA: 1/1000. Western blotting: 1/100 - 1/500. Flow Cytometry: 1/10 - 1/50. Other applications not tested. Optimal dilutions are dependent on conditions and should be determined by the user. |
| Specificity: | This antibody reacts to C11orf63. |
| Species Reactivity: | Tested: Human. |
| Add. Information: | Molecular Weight: 88569 Da |
| Storage: | Store the antibody undiluted at 2-8°C for one month or (in aliquots) at -20°C for longer. Avoid repeated freezing and thawing. Shelf life: one year from despatch. |

Pictures:

C11orf63 Antibody (C-term) (Cat. #AP50435PU-N) western blot analysis in CEM cell line lysates (35mg/lane). This demonstrates the C11orf63 antibody detected the C11orf63 protein (arrow).



C11orf63 Antibody (C-term) (Cat. #AP50435PU-N) flow cytometric analysis of CEM cells (right histogram) compared to a negative control cell (left histogram). FITC-conjugated goat-anti-rabbit secondary antibodies were used for the analysis.

