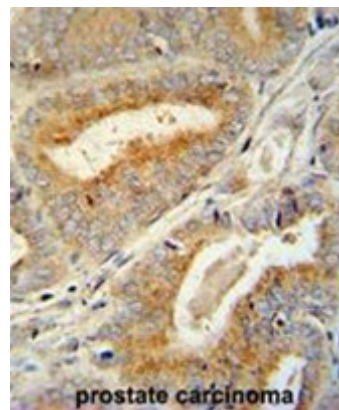


AP50363PU-N**Polyclonal Antibody to BCORL1 (N-term) - Aff - Purified**

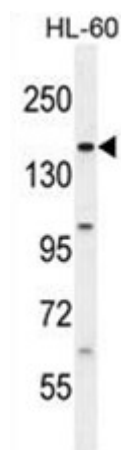
Alternate names:	BCL-6 corepressor-like protein 1
Quantity:	0.4 ml
Concentration:	0.5 mg/ml (Lot specific)
Background:	The protein encoded by this gene is a transcriptional corepressor that is found tethered to promoter regions by DNA-binding proteins. The encoded protein can interact with several different class II histone deacetylases to repress transcription. Two transcript variants encoding different isoforms have been found for this gene.
Uniprot ID:	Q5H9F3
NCBI:	NP_068765
GeneID:	63035
Host / Isotype:	Rabbit / Ig
Immunogen:	KLH conjugated synthetic peptide between 69-98 amino acids from the N-terminal region of Human BCORL1. Genename: BCORL1
Format:	State: Liquid purified Ig fraction Purification: Protein A column, followed by peptide affinity purification Buffer System: PBS containing 0.09% (W/V) Sodium Azide as preservative
Applications:	Peptide ELISA: 1/1000. Western blotting: 1/1000. Flow Cytometry: 1/10-1/50. Immunohistochemistry on Paraffin Sections: 1/50-1/100. Other applications not tested. Optimal dilutions are dependent on conditions and should be determined by the user.
Specificity:	This antibody recognizes Human BCORL1 (N-term).
Add. Information:	Molecular Weight: 182526 Da
Storage:	Store undiluted at 2-8°C for one month or (in aliquots) at -20°C for longer. Avoid repeated freezing and thawing. Shelf life: one year from despatch.
General Readings:	1. Pagan, J.K., et al. J. Biol. Chem. 282(20):15248-15257(2007) 2. Lose, F., et al. Breast Cancer Res. 9 (4), R54 (2007)

Pictures:

BCORL1 antibody (N-term) (Cat. #AP50363PU-N) immunohistochemistry analysis in formalin fixed and paraffin embedded human prostate carcinoma followed by peroxidase conjugation of the secondary antibody and DAB staining. This data demonstrates the use of the BCORL1 antibody (N-term) for immunohistochemistry. Clinical relevance has not been evaluated.



BCORL1 Antibody (N-term) (Cat. #AP50363PU-N) western blot analysis in HL-60 cell line lysates (35µg/lane). This demonstrates the BCORL1 antibody detected the BCORL1 protein (arrow).



BCORL1 Antibody (N-term) (Cat. #AP50363PU-N) flow cytometric analysis of HL-60 cells (right histogram) compared to a negative control cell (left histogram). FITC-conjugated goat-anti-rabbit secondary antibodies were used for the analysis.

