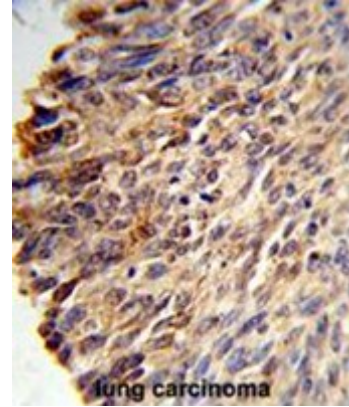


AP50358PU-N**Polyclonal Antibody to Bcl-3 (Center) - Aff - Purified**

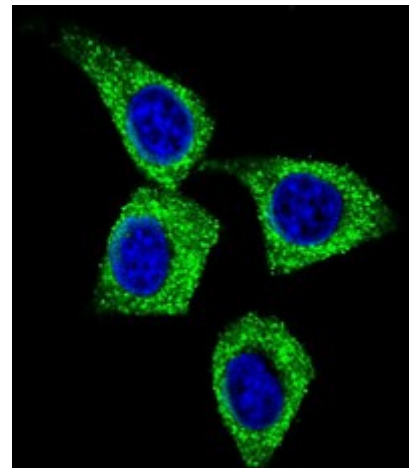
Alternate names:	B-cell lymphoma 3-encoded protein, BCL3, BCL4, D19S37
Quantity:	0.4 ml
Concentration:	0.44 mg/ml (Lot specific)
Background:	BCL3 is a proto-oncogene candidate. It is identified by its translocation into the immunoglobulin alpha-locus in some cases of B-cell leukemia. The protein contains seven ankyrin repeats, which are most closely related to those found in I kappa B proteins. This protein functions as a transcriptional co-activator that activates through its association with NF-kappa B homodimers.
Uniprot ID:	P20749
NCBI:	NP_005169
GeneID:	602
Host / Isotype:	Rabbit / Ig
Immunogen:	KLH conjugated synthetic peptide between 249~277 amino acids from the Center region of Human BCL3
Format:	State: Liquid purified Ig fraction Purification: Protein A Chromatography followed by peptide affinity purification Buffer System: PBS Preservatives: 0.09% (W/V) Sodium Azide
Applications:	ELISA: 1/1000. Western blotting: 1/1000. Immunohistochemistry on Paraffin Sections: 1/50-1/100. Flow Cytometry: 1/10-1/50. Immunofluorescence: 1/10-1/50. Other applications not tested. Optimal dilutions are dependent on conditions and should be determined by the user.
Molecular Weight:	46800 Da
Specificity:	This antibody recognizes Bcl-3.
Species Reactivity:	Tested: Human and Mouse.
Storage:	Store undiluted at 2-8°C for one month or (in aliquots) at -20°C for longer. Avoid repeated freezing and thawing. Shelf life: one year from despatch.
General Readings:	1. Kabuta,T. et.al., Biochem. Biophys. Res. Commun. 394 (3), 697-702 (2010) 2. Talmud,P.J. et.al., Am. J. Hum. Genet. 85 (5), 628-642 (2009) 3. Folco,E.J. et.al., J. Biol. Chem. 284 (38), 25569-25575 (2009)

Pictures:

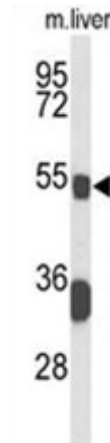
Formalin-fixed and paraffin-embedded human lung carcinoma reacted with BCL3 Antibody (Center), which was peroxidase-conjugated to the secondary antibody, followed by DAB staining. This data demonstrates the use of this antibody for immunohistochemistry; clinical relevance has not been evaluated.



Confocal immunofluorescent analysis of BCL3 Antibody (Center) (Cat#AP50358PU-N) with Hela cell followed by Alexa Fluor 488-conjugated goat anti-rabbit IgG (green). DAPI was used to stain the cell nuclear (blue).



Western blot analysis of BCL3 Antibody (Center) (Cat. #AP50358PU-N) in mouse liver tissue lysates (35µg/lane). BCL3 (arrow) was detected using the purified Pab.



BCL3 Antibody (Center) (Cat. #AP50358PU-N) flow cytometry analysis of HeLa cells (bottom histogram) compared to a negative control cell (top histogram). FITC-conjugated goat-anti-rabbit secondary antibodies were used for the analysis.

