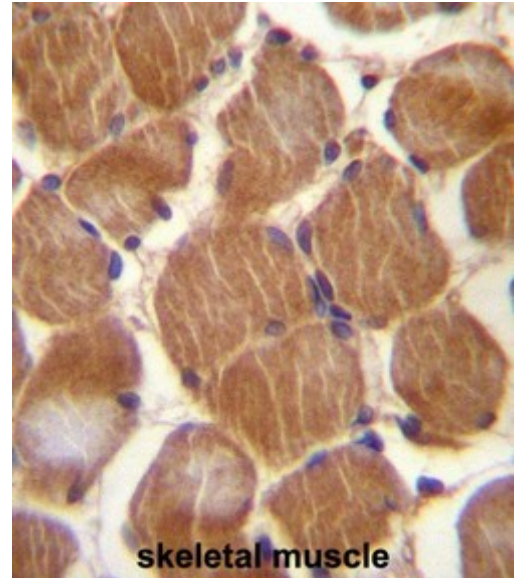


AP50265PU-N**Polyclonal Antibody to ACAM / ASAM (Center) - Aff - Purified**

Alternate names:	Adipocyte adhesion molecule, CLMP
Quantity:	0.4 ml
Concentration:	lot specific
Background:	The CTX (see VSIG2, MIM 606011) family of proteins, including ASAM, are type I transmembrane proteins within the Ig superfamily that localize to junctional complexes between endothelial and epithelial cells and may play a role in cell-cell adhesion (Raschperger et al., 2004 [PubMed 14573622]).[supplied by OMIM]
Uniprot ID:	Q9H6B4
NCBI:	NP_079045
GeneID:	79827
Host / Isotype:	Rabbit / Ig
Immunogen:	KLH conjugated synthetic peptide between 80-111 amino acids from the Central region of human ASAM
Format:	State: Liquid purified Ig fraction Purification: Affinity chromatography on Protein A Buffer System: PBS containing 0.09% (W/V) sodium azide as preservative
Applications:	ELISA: 1/1000. Western blotting: 1/100 - 1/500. Immunohistochemistry on paraffin sections: 1/10 - 1/50. Other applications not tested. Optimal dilutions are dependent on conditions and should be determined by the user.
Specificity:	This antibody reacts to ACAM.
Species Reactivity:	Tested: Human.
Add. Information:	Molecular Weight: 41281 Da
Storage:	Store the antibody undiluted at 2-8°C for one month or (in aliquots) at -20°C for longer. Avoid repeated freezing and thawing. Shelf life: one year from despatch.
General Readings:	1. Rose, J.E., et al. Mol. Med. 16 (7-8), 247-253 (2010) 2. Kawabata, K., et al. Gene Ther. 14(16):1199-1207(2007) 3. Lamesch, P., et al. Genomics 89(3):307-315(2007) 4. Eguchi, J., et al. Biochem. J. 387 (PT 2), 343-353 (2005) 5. Raschperger, E., et al. J. Biol. Chem. 279(1):796-804(2004)

Pictures:

ASAM Antibody (Center) (Cat. #AP50265PU-N) immunohistochemistry analysis in formalin fixed and paraffin embedded human skeletal muscle followed by peroxidase conjugation of the secondary antibody and DAB staining. This data demonstrates the use of ASAM Antibody (Center) for immunohistochemistry. Clinical relevance has not been evaluated.



ASAM Antibody (Center) (Cat. #AP50265PU-N) western blot analysis in HepG2 cell line lysates (35µg/lane). This demonstrates the ASAM antibody detected the ASAM protein (arrow).

