

AP50210PU-N**Polyclonal Antibody to APOBEC3F (N-term) - Aff - Purified****Alternate names:**

Apolipoprotein B mRNA editing enzyme, DNA dC->dU-editing enzyme APOBEC-3F, catalytic polypeptide-like 3F

Quantity:

0.4 ml

Concentration:

lot specific

Background:

This protein is a member of the cytidine deaminase gene family. It is one of seven related genes or pseudogenes found in a cluster, thought to result from gene duplication, on chromosome 22. Members of the cluster encode proteins that are structurally and functionally related to the C to U RNA-editing cytidine deaminase APOBEC1. It is thought that the proteins may be RNA editing enzymes and have roles in growth or cell cycle control.

Uniprot ID:

[Q8IUX4](#)

NCBI:

[NP_660341](#)

GeneID:

[200316](#)

Host / Isotype:

Rabbit / Ig

Immunogen:

KLH conjugated synthetic peptide between 28~57 amino acids from the N-terminal region of human APOBEC3F

Format:

State: Liquid purified Ig fraction

Purification: Affinity chromatography on Protein A

Buffer System: PBS containing 0.09% (W/V) sodium azide as preservative

Applications:

ELISA: 1/1000.

Western blotting: 1/100 - 1/500.

Immunohistochemistry: 1/50 - 1/100.

Flow cytometry: 1/10 - 1/50.

Other applications not tested. Optimal dilutions are dependent on conditions and should be determined by the user.

Specificity:

This antibody reacts to APOBEC3F.

Species Reactivity:

Tested: Human.

Add. Information:

Molecular Weight: 45020 Da

Storage:

Store the antibody undiluted at 2-8°C for one month or (in aliquots) at -20°C for longer.

Avoid repeated freezing and thawing.

Shelf life: one year from despatch.

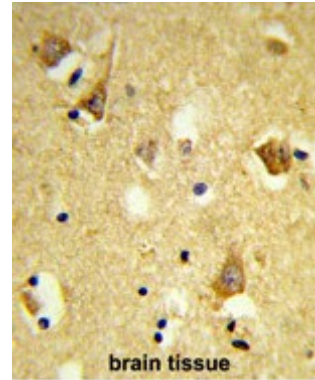
General Readings:

1. Khatua,A.K., et.al., Virology 400 (1), 68-75 (2010)

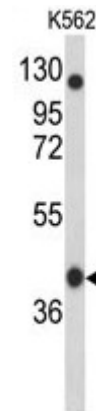
2. Koning,F.A., et.al., J. Virol. 83 (18), 9474-9485 (2009)

Pictures:

Formalin-fixed and paraffin-embedded human brain tissue reacted with APOBEC3F Antibody (N-term), which was peroxidase-conjugated to the secondary antibody, followed by DAB staining. This data demonstrates the use of this antibody for immunohistochemistry; clinical relevance has not been evaluated.



Western blot analysis of APOBEC3F Antibody (N-term) (Cat. #AP50210PU-N) in K562 cell line lysates (35µg/lane). APOBEC3F (arrow) was detected using the purified Pab.



APOBEC3F Antibody (N-term) (Cat. #AP50210PU-N) flow cytometry analysis of K562 cells (bottom histogram) compared to a negative control cell (top histogram). FITC-conjugated goat-anti-rabbit secondary antibodies were used for the analysis.

