

**AP42251PU-N****Polyclonal Antibody to CBFA2T3 - Aff - Purified****Alternate names:**

MTG16, MTG8-related protein 2, MTGR2, Myeloid translocation gene on chromosome 16 protein, ZMYND4, Zinc finger MYND domain-containing protein 4

**Quantity:**

50 µg

**Background:**

The t(16;21)(q24;q22) translocation is a rare but recurrent chromosomal abnormality associated with therapy-related myeloid malignancies. The translocation produces a chimeric gene made up of the 5'-region of the AML1 gene fused to the 3'-region of CBFA2T3. In addition, CBFA2T3 is a putative breast tumor suppressor.

**Uniprot ID:**

[O75081](#)

**NCBI:**

[NP\\_787127](#)

**GeneID:**

[863](#)

**Host:**

Rabbit

**Immunogen:**

The immunogen for anti-CBFA2T3 antibody: synthetic peptide directed towards the N terminal of human CBFA2T3

**AA Sequence:**

QPRSTPPSMPPPPAASQGATRPPSFTPHLTMNGSSHSPTAINGAPCTPN

**Format:**

**State:** Liquid. Purified antibody supplied in 1x PBS buffer with 0.09% (w/v) sodium azide and 2% sucrose.

**Purification:** Purified using peptide immunoaffinity column

**Applications:**

Western blotting (0.2 - 1 µg/ml)

Other applications not tested. Optimal dilutions are dependent on conditions and should be determined by the user.

**Species Reactivity:**

**Tested:** Human

**Expected from sequence similarity:** Mouse, Rat, Chicken

**Storage:**

Store undiluted at 2-8°C for one month or (in aliquots) at -20°C to -80°C for longer. Avoid repeated freezing and thawing.

Shelf life: one year from despatch.

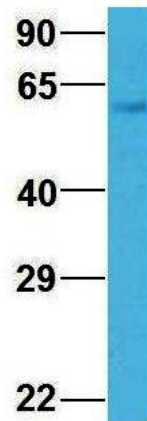
**General Readings:**

Powell, J.A., et al., (2002) Genomics 80 (3), 303-310

**Pictures:**

1Hum. Adult Placenta; Host: Rabbit;  
Target Name: CHAD; Sample Tissue:  
Human Adult Placenta; Antibody  
Dilution: 1.0 ug/ml

### CBFA2T3



Rabbit Anti-CBFA2T3  
Sample Type: Human Adult  
Placenta  
Antibody Concentration: 1ug/mL

WB Suggested Anti-CBFA2T3 Antibody  
Titration: 0.2-1 ug/ml; Positive Control:  
Jurkat cell lysate CBFA2T3 is supported by  
BioGPS gene expression data to be  
expressed in Jurkat



3Human MCF7; Host: Rabbit; Target Name: NOP56; Sample Tissue: MCF7; Antibody Dilution: 1.0 ug/ml CBFA2T3 is supported by BioGPS gene expression data to be expressed in MCF7

