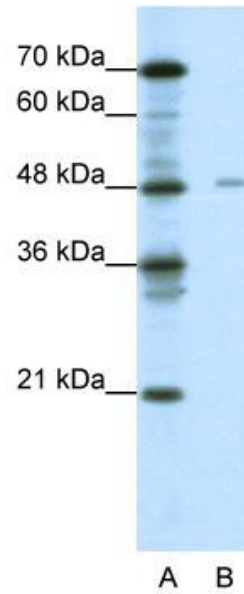


**AP42133PU-N****Polyclonal Antibody to NFIX - Aff - Purified**

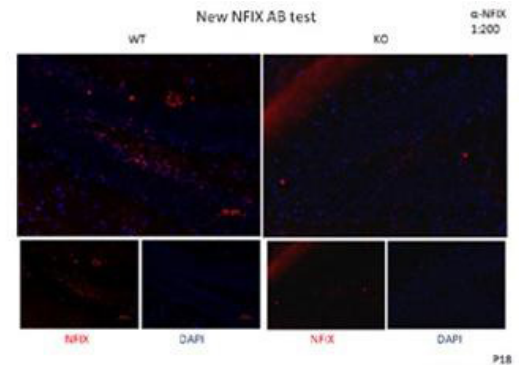
<b>Alternate names:</b>	CCAAT-box-binding transcription factor, NF-I/X, NF-I/X, NFI-X, Nuclear factor 1 X-type, TGGCA-binding protein
<b>Quantity:</b>	50 µg
<b>Background:</b>	Nuclear factor I (NFI) proteins constitute a family of sequence-specific transcription factors whose functional diversity is generated through transcription from four different genes (NFI-A, NFI-B, NFI-C, and NFI-X), alternative RNA splicing, and protein heterodimerization. NFI-X has divergent functions after binding in promoter or enhancer position. This property, combined with the differential expression of NFI-X, can achieve cell-type specificity of NFI dependent promoters and enhancers.
<b>Uniprot ID:</b>	<a href="#">Q14938</a>
<b>NCBI:</b>	<a href="#">NP_002492</a>
<b>GeneID:</b>	<a href="#">4784</a>
<b>Host:</b>	Rabbit
<b>Immunogen:</b>	The immunogen for anti-NFIX antibody: synthetic peptide directed towards the middle region of human NFIX <b>AA Sequence:</b> YFVHTPESGQSDSSNQGDADIKPLPNGHLSFQDCFVTSGVWNVTELVRV
<b>Format:</b>	<b>State:</b> Liquid. Purified antibody supplied in 1x PBS buffer with 0.09% (w/v) sodium azide and 2% sucrose. <b>Purification:</b> Purified using peptide immunoaffinity column
<b>Applications:</b>	Western blotting (0.2 - 1.0 µg/ml) Immunohistochemistry on paraffin embedded sections (2 - 8 µg/ml) Other applications not tested. Optimal dilutions are dependent on conditions and should be determined by the user.
<b>Species Reactivity:</b>	<b>Tested:</b> Human <b>Expected from sequence similarity:</b> Mouse, Rat, Dog, Zebrafish
<b>Storage:</b>	Store undiluted at 2-8°C for one month or (in aliquots) at -20°C to -80°C for longer. Avoid repeated freezing and thawing. Shelf life: one year from despatch.
<b>General Readings:</b>	Norquay,L.D., et al., (2003) Mol. Endocrinol. 17 (6), 1027-1038

**Pictures:**

WB Suggested Anti-NFIX Antibody  
 Titration: 0.2-1 ug/ml; ELISA Titer:  
 1:312500; Positive Control: Jurkat cell  
 lysate



DG of Hippocampus; Dilution: 1:200



Immunohistochemistry with Human  
 Prostate lysate tissue at an antibody  
 concentration of 5.0ug/ml using anti-  
 NFIX antibody

