

**AP42132PU-N****Polyclonal Antibody to TSFM - Aff - Purified****Alternate names:**

EF-Ts, EF-TsMt, Elongation factor Ts mitochondrial

**Quantity:**

50 µg

**Background:**

The TSFM gene encodes a protein that is expressed in all tissues, with the highest levels of expression in skeletal muscle, liver, and kidney. It associates with the EF-Tu.GDP complex and induces the exchange of GDP to GTP. It remains bound to the aminoacyl-tRNA.EF-Tu.GTP complex up to the GTP hydrolysis stage on the ribosome. Defects in TSFM are the cause of combined oxidative phosphorylation deficiency type 3 (COXPD3). Defects in the mitochondrial oxidative phosphorylation system result in devastating, mainly multisystem, diseases. COXPD3 symptoms include severe metabolic acidosis with encephalomyopathy or with hypertrophic cardiomyopathy. Patients show a severe defect in mitochondrial translation leading to a failure to assemble adequate amounts of three of the oxidative phosphorylation complexes

**Uniprot ID:**[P43897](#)**NCBI:**[NP\\_005717](#)**GeneID:**[10102](#)**Host:**

Rabbit

**Immunogen:**

The immunogen for anti-TSFM antibody: synthetic peptide directed towards the N terminal of human TSFM.

**AA Sequence:**

KQAEIWLHKEAQKEGWSKAAKLQGRKTKEGLIGLLQEGNTTVLVEVNCEET

**Format:**

**State:** Liquid. Purified antibody supplied in 1x PBS buffer with 0.09% (w/v) sodium azide and 2% sucrose.

**Purification:** Purified using peptide immunoaffinity column

**Applications:**

Western blotting (0.2 - 1.0 µg/ml)

Immunohistochemistry on paraffin embedded sections (2 - 8 µg/ml)

Other applications not tested. Optimal dilutions are dependent on conditions and should be determined by the user.

**Species Reactivity:****Tested:** Human**Expected from sequence similarity:** Mouse, Rat, Dog, African clawed frog, Bovine, Zebrafish**Storage:**

Store undiluted at 2-8°C for one month or (in aliquots) at -20°C to -80°C for longer. Avoid repeated freezing and thawing.

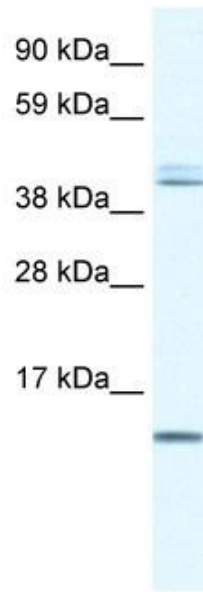
Shelf life: one year from despatch.

**General Readings:**

Vernon,J.L., et al., (2000) Cytogenet. Cell Genet. 89 (3-4), 145-146

**Pictures:**

WB Suggested Anti-TSFM Antibody  
Titration: 0.2-1 ug/ml; Positive Control:  
Human Liver



Human kidney

