

AP42045PU-N**Polyclonal Antibody to DBP - Aff - Purified****Alternate names:**

Albumin D box-binding protein, Albumin D-element-binding protein, D site of albumin promoter (albumin D-box) binding protein, D site-binding protein, DABP, TaxREB302

Quantity:

50 µg

Background:

This transcriptional activator recognizes and binds to the sequence 5'-RTTAYGTAAAY-3' found in the promoter of genes such as albumin, CYP2A4 and CYP2A5. It is not essential for circadian rhythm generation, but modulates important clock output genes. May be a direct target for regulation by the circadian pacemaker component clock. May affect circadian period and sleep regulation. DBP is a member of the PAR bZIP (proline and acidic amino acid-rich basic leucine zipper) transcription factor family.

Uniprot ID:

[Q10586](#)

NCBI:

[NP_001343](#)

GeneID:

[1628](#)

Host:

Rabbit

Immunogen:

The immunogen for anti-DBP antibody: synthetic peptide directed towards the middle region of human DBP

AA Sequence:

SSPGHAPARAALGTASGHRAGLTSRDTPSPVDPDTVEVLMTFEPDPADLA

Format:

State: Liquid. Purified antibody supplied in 1x PBS buffer with 0.09% (w/v) sodium azide and 2% sucrose.

Purification: Purified on peptide immunoaffinity column

Applications:

Western blotting (0.2 - 1 µg/ml)

Immunohistochemistry on paraffin embedded sections (2 - 8 µg/ml)

Other applications not tested. Optimal dilutions are dependent on conditions and should be determined by the user.

Species Reactivity:

Tested: Human

Expected from sequence similarity: Mouse, Rat, Dog, Bovine, Sheep

Storage:

Store undiluted at 2-8°C for one month or (in aliquots) at -20°C to -80°C for longer.

Avoid repeated freezing and thawing.

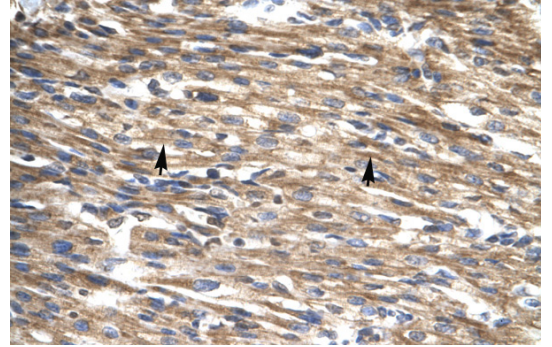
Shelf life: one year from despatch.

General Readings:

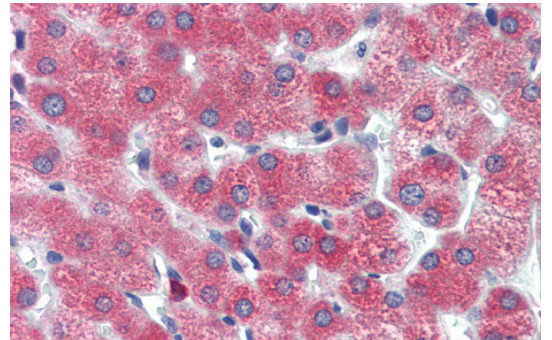
Smith, J.S., et al., (2000) Genomics 64 (1), 44-50

Pictures:

Human Heart; DBP antibody - middle region (AP42045PU-N) in Human Heart cells using Immunohistochemistry



Human Liver; Immunohistochemistry with Human Liver cell lysate tissue at an antibody concentration of 5.0ug/ml using anti-DBP antibody (AP42045PU-N); DBP antibody - middle region (AP42045PU-N) in Human Liver cells using Immunohistochemistry



Human HepG2; WB Suggested Anti-DBP Antibody Titration: 0.2-1 ug/ml. ELISA Titer: 1:1562500. Positive Control: HepG2 cell lysate; DBP antibody - middle region (AP42045PU-N) in Human HepG2 cells using Western Blot

