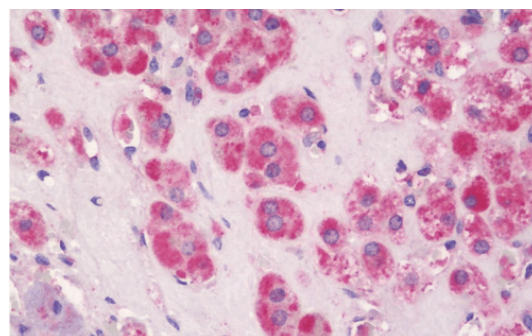


AP33392PU-N

Polyclonal Antibody to SLC16A2 (93-142) - Aff - Purified

Alternate names:	MCT 7, MCT 8, MCT8, Monocarboxylate transporter 7, Monocarboxylate transporter 8, Solute carrier family 16 member 2, X-linked PEST-containing transporter, XPCT
Quantity:	50 µl
Concentration:	1.0 mg/ml
Uniprot ID:	P36021
NCBI:	NP_006508.1
GeneID:	6567
Host / Isotype:	Rabbit / IgG
Immunogen:	SLC16A2 / MCT8 antibody was raised against synthetic peptide from Human SLC16A2 (aa93-142).
Format:	State: Liquid purified IgG fraction Purification: Immunoaffinity Chromatography Buffer System: PBS, pH 7.4, 150 mM Sodium Chloride Preservatives: 0.02% Sodium Azide Stabilizers: 50% Glycerol
Applications:	ELISA: 1/10000. Immunohistochemistry on Paraffin Sections: 1/200. Western Blot: 1/500 - 1/1000. Other applications not tested. Optimal dilutions are dependent on conditions and should be determined by the user.
Specificity:	This antibody detects endogenous levels of SLC16A2.
Species Reactivity:	Tested: Human. Expected from sequence similarity: Mouse, Rat.
Storage:	Upon receipt, store undiluted (in aliquots) at -20°C. Avoid repeated freezing and thawing. Shelf life: one year from despatch.
Pictures:	Human Adrenal: Formalin-Fixed, Paraffin-Embedded (FFPE)



Western blot of the lysates from HT-29 cells using SLC16A2 antibody.

