

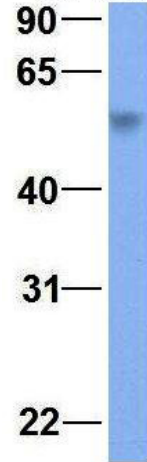
AP32780PU-N**Polyclonal Antibody to SLC2A9 / GLUT9 - Aff - Purified**

Alternate names:	GLUT-9, Glucose transporter type 9, Solute carrier family 2 facilitated glucose transporter member 9
Quantity:	50 µg
Concentration:	1.0 mg/ml after reconstitution
Background:	SLC2A9 is a member of the SLC2A facilitative glucose transporter family. Members of this family play a significant role in maintaining glucose homeostasis. SLC2A9 may play a role in the development and survival of chondrocytes in cartilage matrices. This gene encodes a member of the SLC2A facilitative glucose transporter family. Members of this family play a significant role in maintaining glucose homeostasis. The encoded protein may play a role in the development and survival of chondrocytes in cartilage matrices. Two transcript variants encoding distinct isoforms have been identified for this gene.
Uniprot ID:	Q9NRM0
NCBI:	NP_001001290
GenelD:	56606
Host:	Rabbit
Immunogen:	Synthetic peptide directed towards the middle region of Human SLC2A9 AA Sequence: VVTIVITMACYQLCGLNAIWFYTNISIFGKAGIPPAKIPYVTLSTGGIETL
Format:	State: Liquid. Purified antibody supplied in 1x PBS buffer with 0.09% (w/v) sodium azide and 2% sucrose. Purification: Affinity Chromatography
Applications:	ELISA: 1/1562500 (Titer). Western Blot: 0.2-1 µg/ml. Positive Control: HepG2 Cell Lysate. Other applications not tested. Optimal dilutions are dependent on conditions and should be determined by the user.
Molecular Weight:	56 kDa (511 amino acids)
Specificity:	This antibody recognizes SLC2A9/GLUT9 (middle region).
Species Reactivity:	Tested: Human. Expected from sequence similarity: Horse (92%), Guinea pig (90%), Bovine (85%), Dog (85%), Mouse (85%), Rat (78%).
Storage:	Store undiluted at 2-8°C for one month or (in aliquots) at -20°C to -80°C for longer. Avoid repeated freezing and thawing. Shelf life: one year from despatch.

Pictures:

Host: Rabbit; Target Name: SLC2A9;
Sample Tissue: Human Fetal Lung;
Antibody Dilution: 1.0 ug/ml

SLC2A9



Rabbit Anti-SLC2A9
Sample Type: Human Fetal Lung
Antibody Concentration: 1ug/mL

WB Suggested Anti-SLC2A9 Antibody
Titration: 0.2-1 ug/ml; ELISA Titer:
1:1562500; Positive Control: HepG2 cell
lysate; SLC2A9 is supported by BioGPS
gene expression data to be expressed in
HepG2

