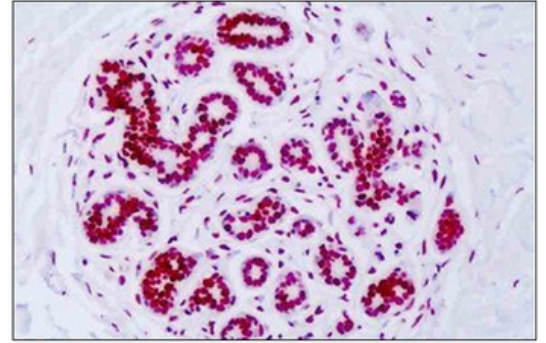


AP32267PU-N**Polyclonal Antibody to Histone H3 (acetyl K18) - Aff - Purified**

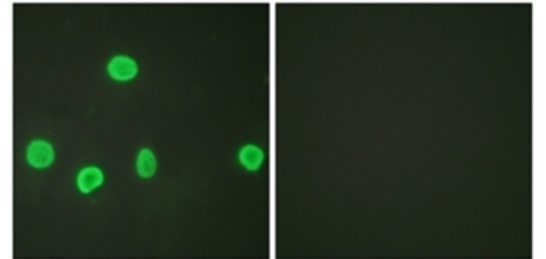
Alternate names:	H3 Histone family, HIST1H3
Quantity:	50 µl
Concentration:	1.0 mg/ml
Host / Isotype:	Rabbit / IgG
Immunogen:	Synthetic peptide derived from Human Histone H3 around the acetylation site of Lysine 18 AA Sequence: P-R-K ^A -Q-L
Format:	State: Liquid purified IgG fraction Purification: Immunoaffinity Chromatography Buffer System: PBS (without Mg ²⁺ , Ca ²⁺), pH 7.4, 150 mM Sodium Chloride, 50% Glycerol Preservatives: 0.02% Sodium Azide
Applications:	ELISA: 1/5000. Immunofluorescence: 1/100 - 1/500. Immunohistochemistry on Paraffin Sections: 1/133 - 1/200. Western Blot: 1/500 - 1/1000. Other applications not tested. Optimal dilutions are dependent on conditions and should be determined by the user.
Molecular Weight:	15 kDa
Specificity:	This Antibody detects endogenous levels of total Histone H3 protein only when Acetylated at Lysine18.
Species Reactivity:	Tested: Human, Mouse, Rat.
Storage:	Store undiluted at 2-8°C for one month or (in aliquots) at -20°C for longer. Avoid repeated freezing and thawing. Shelf life: one year from despatch.
General Readings:	1. KW Marvin, J. Biol. Chem., TA Chen, Nov 1990; 265: 19839-19847. 2. J. Biol. Chem., Michael J. Hendzel, Apr 1991; 266: 6489 - 6498. 3. Mol. Biol. Cell, Sep 1998; 9: 2491.

Pictures:

Human, Breast epithelium: Formalin-Fixed Paraffin-Embedded (FFPE)



Immunofluorescence analysis of HeLa cells, using Histone H3 (Acetyl-Lys18) Antibody Cat.-No AP32267PU-N. The picture on the right is treated with the synthesized peptide.



Western blot analysis of extracts from HeLa cells, treated with TSA 400 nM 24h, using Histone H3 (Acetyl-Lys18) Antibody Cat.-No AP32267PU-N. The lane on the right is treated with the synthesized peptide.

