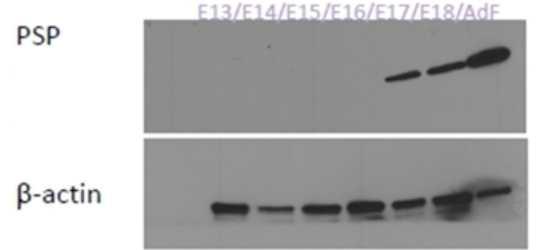


AP31965PU-N**Polyclonal Antibody to PSP (146-160) - Aff - Purified**

Alternate names:	BPI fold-containing family A member 2, BPIA2, Parotid secretory protein
Quantity:	0.1 mg
Concentration:	0.5 mg/ml
Background:	Predominates in the parotid glands, present in smaller amounts (1/10) in the submaxillary glands and in the sublingual glands, and at lower amount in the pancreas but undetectable in the liver. Found also in lacrimal gland. Expressed at low levels at day 3 after birth but increased gradually with age from this time.
Uniprot ID:	P07743
NCBI:	NP_032979.1
GeneID:	19194
Host:	Goat
Immunogen:	Peptide with sequence from the internal region of Mouse PSP (NP_032979.1). Genename: Psp AA Sequence: C-KTNAQTGLPEVTIGK
Format:	State: Liquid purified Ig fraction Purification: Ammonium Sulphate Precipitation followed by Antigen Affinity Chromatography using the immunizing peptide Buffer System: Tris saline, pH~7.3 Preservatives: 0.02% Sodium Azide Stabilizers: 0.5% BSA
Applications:	Peptide ELISA: 1/128000 (Detection limit). Western Blot: 1-3 µg/ml. Detects a band of Approx 25kDa in Mouse mandibular glands from E17 onwards. Data provided by Melinda Larsen, State University of New York, Albany, NY. Immunocytochemistry: 4 µg/ml. A subset of murine submandibular gland cells (E18) show specific staining in secretory granules. <i>Data provided by Melinda Larsen, State University of New York, Albany, NY.</i> Other applications not tested. Optimal dilutions are dependent on conditions and should be determined by the user.
Molecular Weight:	24.8kDa (NP_032979.1).
Specificity:	This antibody recognizes Mouse Parotid Secretory Protein (146-160). Other species not tested.
Storage:	Store undiluted at 2-8°C for one month or (in aliquots) at -20°C for longer. Avoid repeated freezing and thawing. Shelf life: one year from despatch.

Pictures:

AP31965PU-N PSP antibody (1 µg/ml) staining of Mouse Mandibular Gland cell lysates (35µg protein in RIPA buffer). Primary incubation was 1 hour. Detected by chemiluminescence (Super Signal).



AP31965PU-N PSP antibody (4 µg/ml) staining of Mouse Submandibular gland cells (in blue). Counter staining of Ecad in red and nuclear staining in green.

