

AP31946PU-N**Polyclonal Antibody to Prealbumin / Transthyretin - Aff - Purified**

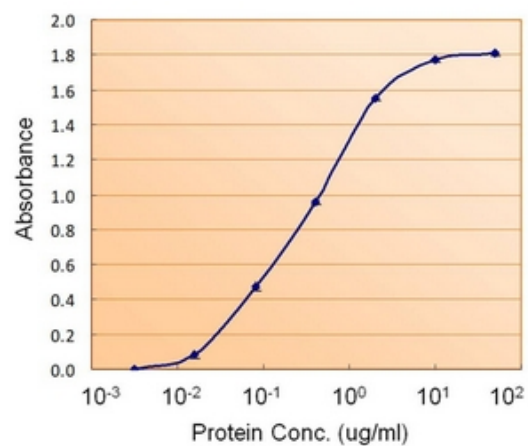
Quantity:	0.1 mg
Concentration:	0.5 mg/ml
Background:	Prealbumin is a serum protein usually occurring at 200-400mg/L serum. Prealbumin migrates faster than albumin in acidic starch gels and include alpha 1 antitrypsin, thyroxine binding prealbumin, and orosomuroid, an alpha 1 acid glycoprotein. The functions of prealbumin are to transport thyroxine, a task it shares with thyroxine binding globulin, retinol binding protein and vitamin A. Polymorphism of prealbumin is known in the mouse and pig.
Host:	Goat
Immunogen:	Synthetic peptide (C-YKVEIDTKSYWK) from the internal region of the protein sequence according to Human Prealbumin (NP_000362.1). Genename: TTR AA Sequence: C-YKVEIDTKSYWK
Format:	State: Liquid purified Ig fraction Purification: Affinity Chromatography Buffer System: Tris saline, pH~7.3 Preservatives: 0.02% Sodium Azide Stabilizers: 0.5% BSA
Applications:	Peptide ELISA: 1/1000 (Detection limit). Enzyme Immunoassay: 5-10 µg/ml. Sandwich-type ELISA with increasing amount of recombinant TTR captured by a Rabbit antibody. Immunohistochemistry on Paraffin Sections: 10 µg/ml. <u>Positive Control:</u> Human Pancreas. Other applications not tested. Optimal dilutions are dependent on conditions and should be determined by the user.
Specificity:	This antibody recognizes Prealbumin / Transthyretin.
Species Reactivity:	Tested: Human. Expected from sequence similarity: Mouse, Rat, Canine (Dog).
Add. Information:	Western Blot: Preliminary experiments gave an approx 20-22kDa band in Human Heart, Kidney, Liver, Lung, Placenta and Testis lysates after 1µg/ml antibody staining. Please note that currently we cannot find an explanation in the literature for the band we observe given the calculated size of 15.9kDa according to NP_000362.1. The 20-22kDa band was successfully blocked by incubation with the immunizing peptide. We would appreciate any feedback from people in the field - have any results been reported with other antibodies/lysates? Have any further splice variants/modified forms been reported?

Storage:

Store undiluted at 2-8°C for one month or (in aliquots) at -20°C for longer.
Avoid repeated freezing and thawing.
Shelf life: one year from despatch.

Pictures:

AP31946PU-N Prealbumin antibody (5 µg/ml) as the reporter with a capture Rabbit antibody (5 µg/ml).



AP31946PU-N (10µg/ml) staining of paraffin embedded Human Pancreas. Steamed antigen retrieval with citrate buffer pH 6, AP-staining.

