

AP31877PU-N**Polyclonal Antibody to Cadherin-23 (61-110) - Aff - Purified****Alternate names:**

CDH23, KIAA1774, KIAA1812

Quantity:

50 µl

Background:

Cadherin like 23 (or Cadherin 23) is, like other members of the cadherin family, a calcium-dependent cell adhesion glycoprotein that preferentially interacts with itself in connecting cells. It is a single pass type I membrane protein that contains 27 cadherin domains. Cadherin like 23 is expressed in the neurosensory epithelium, where it is thought to be involved in stereocilia organisation and hair bundle formation. Defects in the gene encoding Cadherin like 23 are a cause of Usher syndrome, which is characterised by profound congenital sensorineural deafness and eventual blindness. Mutations in this gene are also a cause of non-syndromic sensorineural deafness autosomal recessive type 12 (DFNB12). Cadherin like 23 has also been associated with age-related hearing loss.

Uniprot ID:[Q9H251](#)**NCBI:**[NP_001165401.1](#)**GeneID:**[64072](#)**Host / Isotype:**

Rabbit / IgG

Immunogen:

CDH23 / Cadherin 23 antibody was raised against synthetic peptide from human CDH23 (aa61-110).
Epitope: aa61-110.

Format:

State: Liquid purified IgG fraction
Purification: Immunoaffinity Chromatography
Buffer System: PBS (without Mg²⁺, Ca²⁺), pH 7.4, 150 mM Sodium Chloride, 50% Glycerol
Preservatives: 0.02% Sodium Azide

Applications:

ELISA: 1/10000.
Immunofluorescence: 1/100 - 1/500.
Immunohistochemistry on Paraffin Sections.
Other applications not tested. Optimal dilutions are dependent on conditions and should be determined by the user.

Specificity:

This antibody detects endogenous levels of total CDH23 protein.

Species Reactivity:

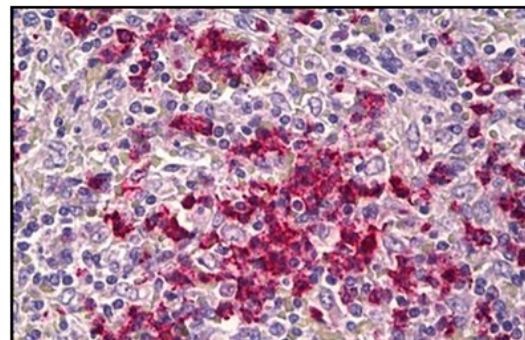
Tested: Human.
Expected from sequence similarity: Mouse and Rat.

Storage:

Store the antibody undiluted at 2-8°C for one month or (in aliquots) at -20°C for longer.
Avoid repeated freezing and thawing.
Shelf life: one year from despatch.

Pictures:

Human Spleen: Formalin-Fixed, Paraffin-Embedded (FFPE)



Immunofluorescence analysis of HeLa cells, using CDH23 Antibody. The picture on the right is treated with the synthesized peptide.

