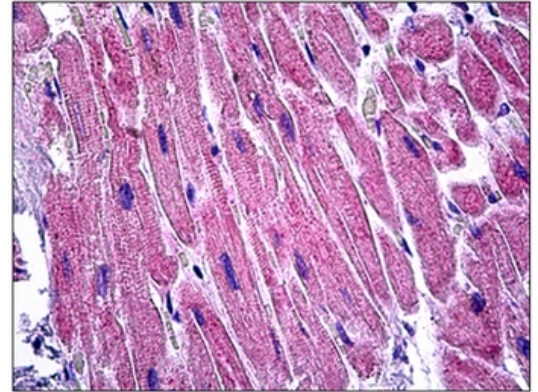


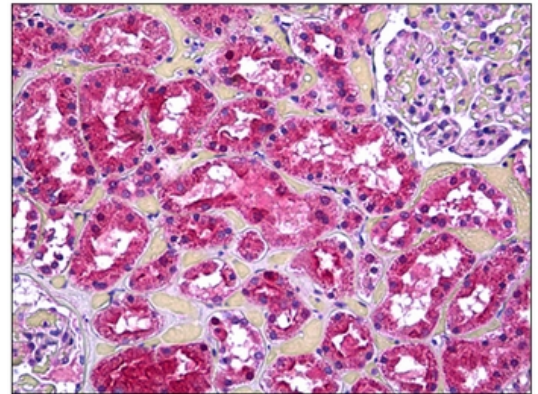
AP31334PU-N**Polyclonal Antibody to Vinculin (VCL) - Purified****Alternate names:** Metavinculin**Quantity:** 50 µl**Concentration:** 1.0 mg/ml**Background:** Vinculin is a cytoskeletal protein associated with cell-cell and cell-matrix junctions, where it is thought to function as one of several interacting proteins involved in anchoring F-actin to the membrane. Multiple alternatively spliced transcript variants have been found for this gene, but the biological validity of some variants has not been determined. Human vinculin protein exhibits a greater than 95% sequence identity to the chicken vinculin protein.**Uniprot ID:** [P18206](#)**NCBI:** [NP_003364](#)**GeneID:** [7414](#)**Host / Isotype:** Rabbit / IgG**Immunogen:** Synthetic peptide - KLH conjugated
Remarks: Antigen Modification: Internal**Format:** **State:** Liquid purified IgG fraction.
Purification: Immunoaffinity Chromatography.
Buffer System: PBS (without Mg²⁺, Ca²⁺), pH 7.4 containing 150 mM Sodium Chloride, 0.02% Sodium Azide and 50% Glycerol.**Applications:** **ELISA:** 1/10000.
Immunofluorescence: 1/100 - 1/500.
Immunohistochemistry on Paraffin Sections: 1/100.
Western Blot: 1/500 - 1/1000.
Other applications not tested. Optimal dilutions are dependent on conditions and should be determined by the user.**Specificity:** This antibody detects endogenous levels of total Vinculin protein.**Species Reactivity:** **Tested:** Human.
Expected from sequence similarity: Mouse and Rat.**Storage:** Store the antibody undiluted at 2-8°C for one month or (in aliquots) at -20°C for longer.
Avoid repeated freezing and thawing.
Shelf life: one year from despatch.

Pictures:

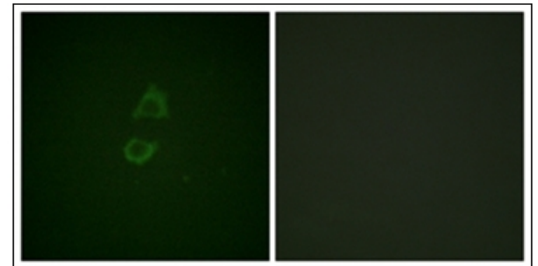
Human Heart: Formalin-Fixed, Paraffin-Embedded (FFPE)



Human Kidney, Tubules: Formalin-Fixed, Paraffin-Embedded (FFPE)



Immunofluorescence analysis of A549 cells, using Vinculin Antibody. The picture on the right is treated with the synthesized peptide.



Western blot analysis of extracts from HeLa cells, treated with forskolin 40nM 30 minutes, using Vinculin Antibody. The lane on the right is treated with the synthesized peptide.

