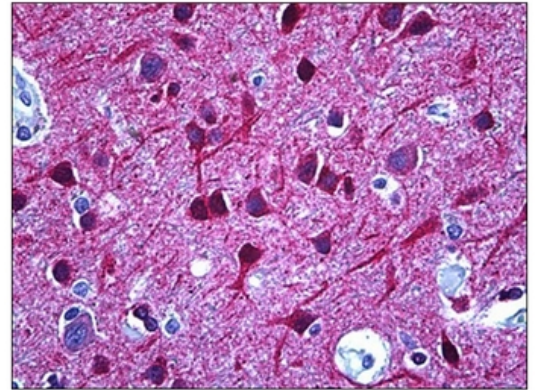


AP31330PU-N**Polyclonal Antibody to DPYSL2 / CRMP2 (C-term) - Purified**

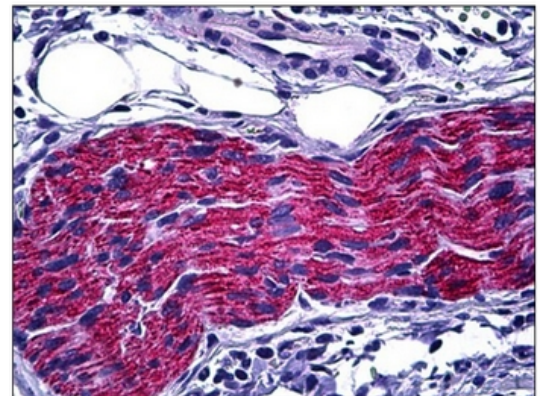
Alternate names:	Collapsin response mediator protein 2, DRP-2, Dihydropyrimidinase-related protein 2, N2A3
Quantity:	50 µl
Concentration:	1.0 mg/ml
Background:	DRP-2, also known as Collapsin Response Mediator Protein-2 (CRMP-2), is expressed at high levels in the developing nervous system and plays a critical role in axonal outgrowth by specifying axon/dendrite fate and establishing neuronal polarity. CRMP-2 enhances axon elongation and branching by binding to tubulin heterodimers to promote microtubule assembly. GSK-3b inactivates CRMP-2 by phosphorylating it at Thr514. CRMP-2 is primed following phosphorylation at Ser522 by CDK5 and at Thr518 by GSK-3b. Phosphorylation of CRMP-2, which decreases tubulin binding ability, can be inhibited by NT-3 and BDNF through the PI3 kinase/Akt pathway. CRMP-2 also mediates semaphorin-induced growth cone collapse. Hyperphosphorylation of CRMP-2 and is found in Alzheimer disease plaques with concurrent elevated GSK-3b activity in these patients.
Uniprot ID:	Q16555
NCBI:	NP_001184222
GeneID:	1808
Host / Isotype:	Rabbit / IgG
Immunogen:	Synthetic peptide - KLH conjugated Remarks: Antigen Modification: C-Terminus
Format:	State: Liquid purified IgG fraction. Purification: Immunoaffinity Chromatography. Buffer System: PBS (without Mg ²⁺ , Ca ²⁺), pH 7.4 containing 150 mM Sodium Chloride, 0.02% Sodium Azide and 50% Glycerol.
Applications:	ELISA: 1/1000. Immunofluorescence: 1/100 - 1/500. Immunohistochemistry on Paraffin Sections: 1/100. Western Blot: 1/500 - 1/1000. Other applications not tested. Optimal dilutions are dependent on conditions and should be determined by the user.
Specificity:	This antibody detects endogenous levels of total DPYSL2 protein.
Species Reactivity:	Tested: Human. Expected from sequence similarity: Mouse and Rat.
Storage:	Store the antibody undiluted at 2-8°C for one month or (in aliquots) at -20°C for longer. Avoid repeated freezing and thawing. Shelf life: one year from despatch.

Pictures:

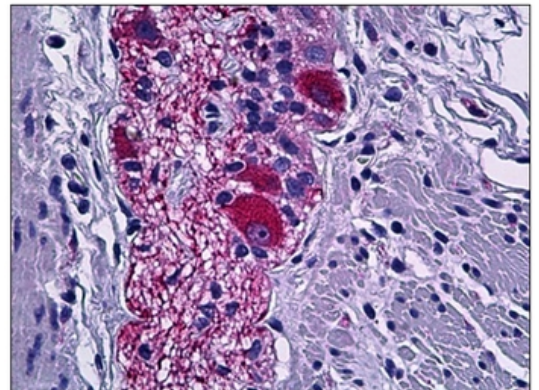
Human Brain, Cortex: Formalin-Fixed, Paraffin-Embedded (FFPE)



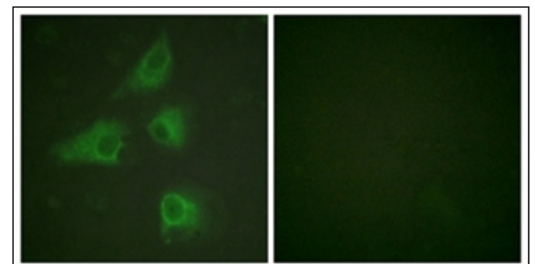
Human Pancreas, Peripheral Nerve: Formalin-Fixed, Paraffin-Embedded (FFPE)



Human Colon, Peripheral Nerve: Formalin-Fixed, Paraffin-Embedded (FFPE)



Immunofluorescence analysis of HeLa cells, using DPYSL2 Antibody. The picture on the right is treated with the synthesized peptide.



Western blot analysis of extracts from A549 cells, treated with EGF 200ng/ml 30', using DPYSL2 antibody. The lane on the right is treated with the synthesized peptide.

