

**AP23997PU-N****Polyclonal Antibody to GPER / GPR30 (357-370) - Aff - Purified****Alternate names:**

CEPR, CMKRL2, Chemoattractant receptor-like 2, DRY12, FEG1, Flow-induced endothelial G-protein coupled receptor 1, G-protein coupled estrogen receptor 1, G-protein coupled receptor 30, GPCR-BR, IL8-related receptor DRY12, LYGPR, Lymphocyte-derived G-protein coupled receptor

**Quantity:**

50 µg

**Concentration:**

0.5 mg/ml

**Background:**

G-protein coupled estrogen receptor that binds to 17-beta-estradiol (E2) with high affinity, leading to rapid and transient activation of numerous intracellular signaling pathways. Stimulates cAMP production, calcium mobilization and tyrosine kinase Src inducing the release of heparin-bound epidermal growth factor (HB-EGF) and subsequent transactivation of the epidermal growth factor receptor (EGFR), activating downstream signaling pathways such as PI3K/Akt and ERK/MAPK.

**Uniprot ID:**[Q99527](#)**NCBI:**[NP\\_001035055](#)**GenelD:**[2852](#)**Host / Isotype:**

Goat / IgG

**Immunogen:**

Synthetic peptide from positions 357-370 of human GPER (NP\_001496.1)

**Genename:** GPR30**AA Sequence:**

C-KAVIPDSTEQSDVR

**Remarks:** Percent identity by BLAST analysis: Human, Gorilla, Monkey, Marmoset, Dog (100%); Mouse, Rat (93%); Hamster, Horse (86%)**Format:****State:** Liquid purified Ig fraction**Purification:** Immunoaffinity Chromatography**Buffer System:** Tris saline buffer, pH 7.3 containing 0.5% BSA as stabilizer and 0.02% sodium azide as preservative**Applications:****Immunohistochemistry on Paraffin Sections:** 3.75 - 7.5 µg/ml.

Other applications not tested. Optimal dilutions are dependent on conditions and should be determined by the user.

**Specificity:**

This antibody reacts to G Protein-Coupled Estrogen Receptor 1 (GPER/GPR30) at 357-370.

**Species Reactivity:****Tested:** Human, Gorilla, Monkey, Marmoset, Dog, Mouse, Rat, Hamster, Horse**Storage:**

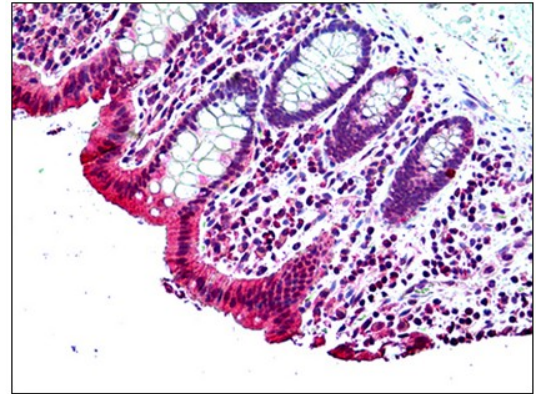
Upon receipt, store undiluted (in aliquots) at -20°C.

Avoid repeated freezing and thawing.

Shelf life: one year from despatch.

**Pictures:**

Human Colon: Formalin-Fixed, Paraffin-Embedded (FFPE)



Human Adrenal: Formalin-Fixed, Paraffin-Embedded (FFPE)

