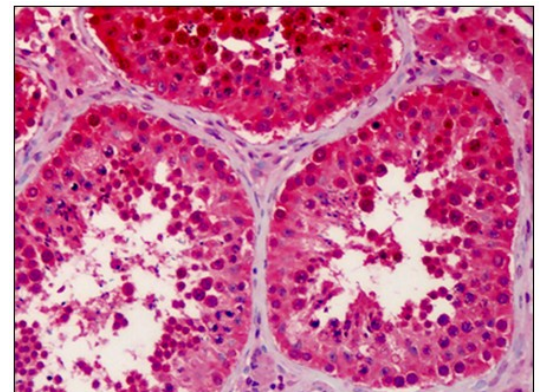


**AP23846PU-N****Polyclonal Antibody to RGPD5 / RGPD6 - Purified**

<b>Alternate names:</b>	BS-63, RANBP2-like and GRIP domain-containing protein 5/6, RGP5, RGP6, RGP7, RGPD7, Ran-binding protein 2-like 1/2, RanBP2-like 1/2, RanBP2L1, RanBP2L2
<b>Quantity:</b>	50 µg
<b>Concentration:</b>	1 mg/ml
<b>Uniprot ID:</b>	<a href="#">Q99666</a>
<b>NCBI:</b>	<a href="#">NP_001032955</a>
<b>GeneID:</b>	<a href="#">729540</a>
<b>Host:</b>	Rabbit
<b>Immunogen:</b>	Synthetic peptide, RGPD5 antibody was raised against a 23 amino acid peptide from near the center of human RGPD5. <b>Genename:</b> RGPD5
<b>Format:</b>	<b>State:</b> Liquid purified Ig fraction <b>Purification:</b> Immunoaffinity Chromatography <b>Buffer System:</b> PBS containing 0.02% sodium azide as preservative
<b>Applications:</b>	<b>Immunohistochemistry on Paraffin Sections:</b> 5 µg/ml. <b>Western Blot:</b> 1 - 2 µg/ml. Other applications not tested. Optimal dilutions are dependent on conditions and should be determined by the user.
<b>Specificity:</b>	This antibody reacts to the internal region of RANBP2-like and GRIP domain containing 5. <b>Species:</b> Human. Other species not tested.
<b>Storage:</b>	Store the antibody undiluted at 2-8°C. Shelf life: one year from despatch.
<b>Pictures:</b>	Human Testis: Formalin-Fixed, Paraffin-Embedded (FFPE)



Western blot analysis of RGD5 in EL4 cell lysate with RGD5 antibody at 1  $\mu\text{g}/\text{ml}$  in (A) the absence and (B) the presence of blocking peptide.

