

**AP23841PU-N****Polyclonal Antibody to CDC42BPA (2-14) - Aff - Purified****Alternate names:**

CDC42-binding protein kinase alpha, DMPK-like alpha, KIAA0451, MRCK alpha, Myotonic dystrophy kinase-related CDC42-binding kinase alpha, Myotonic dystrophy protein kinase-like alpha, Serine/threonine-protein kinase MRCK alpha

**Quantity:**

50 µg

**Concentration:**

0.5 mg/ml

**Background:**

MRCK alpha belongs to the DMPK subfamily. MRCK alpha is a downstream effector of Cdc42 and Rac where it is involved in actin cytoskeletal reorganization and neurite outgrowth.

**Uniprot ID:**[Q5VT25](#)**NCBI:**[NP\\_003598](#)**GeneID:**[8476](#)**Host:**

Goat

**Immunogen:**

Synthetic peptide from the N-terminus of human CDC42BPA / MRCK (NP\_055641.3; NP\_003598.2)

**Genename:** CDC42BPA

**AA Sequence:**

SGEVRLRQLEQFI-C

**Remarks:** Percent identity by BLAST analysis: Human, Gibbon, Monkey, Marmoset, Mouse, Rat, Elephant, Panda, Bovine, Bat, Horse, Rabbit, Opossum, Platypus, Lizard (100%); Chicken (92%)

**Format:**

**State:** Liquid purified Ig fraction

**Purification:** Immunoaffinity Chromatography

**Buffer System:** Tris saline buffer, pH 7.3 containing 0.5% BSA as stabilizer and 0.02% sodium azide as preservative

**Applications:**

**ELISA:** 1/16000.

**Immunohistochemistry on Paraffin Sections:** 3.75 µg/ml.

Other applications not tested. Optimal dilutions are dependent on conditions and should be determined by the user.

**Specificity:**

This antibody reacts to the N-term of CDC42 binding protein kinase alpha (DMPK-like). It is expected to recognise both reported Human isoforms (NP\_055641.3 and NP\_003598.2).

**Species Reactivity:**

**Tested:** Human, Gibbon, Monkey, Marmoset, Mouse, Rat, Elephant, Panda, Bovine, Bat, Horse, Rabbit, Opossum, Platypus, Lizard, Chicken

**Storage:**

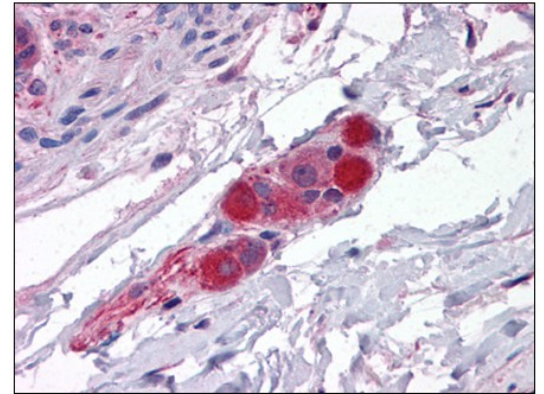
Upon receipt, store undiluted (in aliquots) at -20°C.

Avoid repeated freezing and thawing.

Shelf life: one year from despatch.

**Pictures:**

Human Small Intestine, Submucosal Plexus: Formalin-Fixed, Paraffin-Embedded (FFPE)



Human Brain, Cerebellum: Formalin-Fixed, Paraffin-Embedded (FFPE)

