

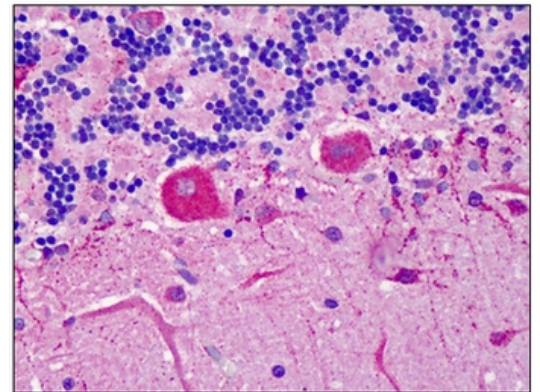
## AP23582PU-N

## Polyclonal Antibody to 14-3-3 protein beta/alpha (1-141) - Aff - Purified

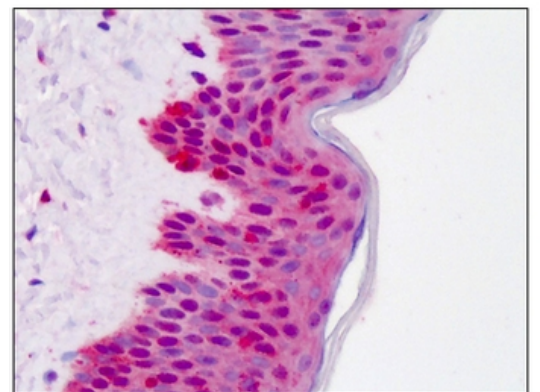
<b>Alternate names:</b>	KCIP-1, Protein 1054, Protein kinase C inhibitor protein 1, YWHAB
<b>Quantity:</b>	50 µl
<b>Concentration:</b>	1 mg/ml
<b>Background:</b>	This gene encodes a protein belonging to the 14-3-3 family of proteins, members of which mediate signal transduction by binding to phosphoserine-containing proteins. This highly conserved protein family is found in both plants and mammals. The encoded protein has been shown to interact with RAF1 and CDC25 phosphatases, suggesting that it may play a role in linking mitogenic signaling and the cell cycle machinery. Two transcript variants, which encode the same protein, have been identified for this gene.
<b>Uniprot ID:</b>	<a href="#">P31946</a>
<b>NCBI:</b>	<a href="#">NP_003395</a>
<b>GeneID:</b>	<a href="#">7529</a>
<b>Host:</b>	Rabbit
<b>Immunogen:</b>	Recombinant protein fragment containing a sequence corresponding to a region within amino acids 1 and 141 of 14-3-3 beta <b>Genename:</b> YWHAB <b>Remarks:</b> Amino acid sequence homology: mouse (85%), rat (97%), pig (100%), zebrafish (84%)
<b>Format:</b>	<b>State:</b> Liquid purified Ig fraction <b>Purification:</b> Immunoaffinity Chromatography <b>Buffer System:</b> 0.1M Tris-glycine, pH 7, 10% Glycerol, 0.01% Thimerosal
<b>Applications:</b>	<b>Immunocytochemistry.</b> <b>Immunofluorescence:</b> 1/100 - 1/200. <b>Immunohistochemistry on Paraffin Sections:</b> 5 µg/ml. <b>Western Blot:</b> 1/5000 - 1/20000. Other applications not tested. Optimal dilutions are dependent on conditions and should be determined by the user.
<b>Specificity:</b>	This antibody detects 14-3-3 beta at 1-141.
<b>Species Reactivity:</b>	<b>Tested:</b> Human, Mouse, Rat, Pig Zebrafish.
<b>Storage:</b>	Store the antibody (in aliquots) at -20°C. Avoid repeated freezing and thawing. Shelf life: one year from despatch.

**Pictures:**

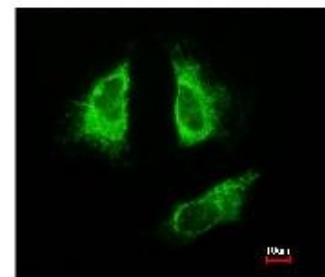
Human Cerebellum: Formalin-Fixed, Paraffin-Embedded (FFPE)



Human Skin: Formalin-Fixed, Paraffin-Embedded (FFPE)



Immunofluorescence analysis of paraformaldehyde-fixed HeLa, using 14-3-3 beta antibody at 1/200 dilution.



Merged with DNA probe



Sample (30 µg of whole cell lysate). Lane A: A431. Lane B: H1299. Lane C: HeLa. Lane D: Hep G2. Lane E: Molt-4. Lane F: Raji. 12% SDS PAGE. YWHAB antibody diluted at 1:10000.

