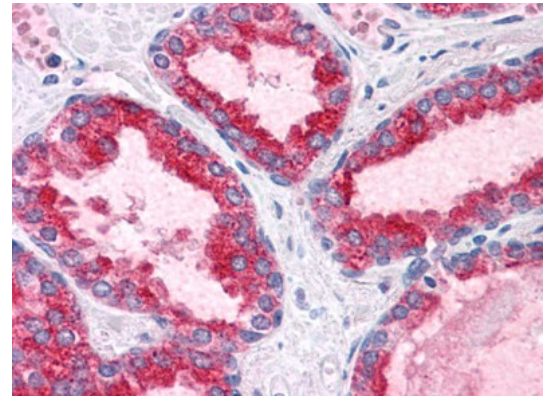
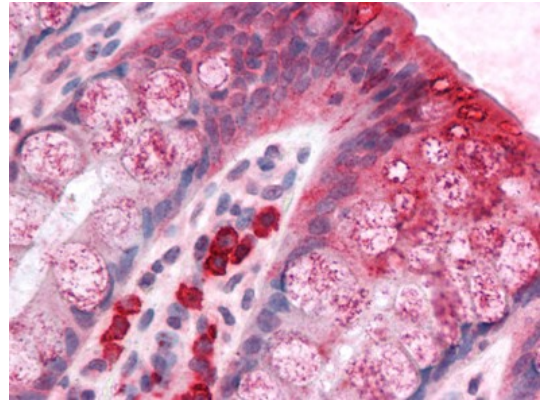


**AP23505PU-N****Polyclonal Antibody to BCAS1 / NABC1 (C-term)**

<b>Alternate names:</b>	AIBC1, Breast carcinoma-amplified sequence 1
<b>Quantity:</b>	50 µg
<b>Concentration:</b>	1 mg/ml
<b>Uniprot ID:</b>	<a href="#">075363</a>
<b>NCBI:</b>	<a href="#">NP_003648</a>
<b>GeneID:</b>	<a href="#">8537</a>
<b>Host:</b>	Rabbit
<b>Immunogen:</b>	BCAS1 antibody was raised against synthetic peptide - KLH conjugated <b>Gene name:</b> BCAS1
<b>Format:</b>	<b>State:</b> Liquid purified Ig fraction <b>Purification:</b> Immunoaffinity Chromatography <b>Buffer System:</b> PBS containing 0.02% sodium azide as preservative
<b>Applications:</b>	<b>ELISA.</b> <b>Immunohistochemistry on Paraffin Sections:</b> 5 µg/ml. <b>Western Blot:</b> 1 - 2 µg/ml. Other applications not tested. Optimal dilutions are dependent on conditions and should be determined by the user.
<b>Specificity:</b>	This antibody reacts to the c-term of Breast Carcinoma Amplified Sequence 1 (BCAS1) protein. <b>Species:</b> Human. Other species not tested.
<b>Storage:</b>	Store the antibody undiluted at 2-8°C. Shelf life: one year from despatch.
<b>Pictures:</b>	Human Prostate: Formalin-Fixed, Paraffin-Embedded (FFPE)



Human Colon: Formalin-Fixed, Paraffin-Embedded (FFPE)



Human Brain, Cortex: Formalin-Fixed, Paraffin-Embedded (FFPE)

