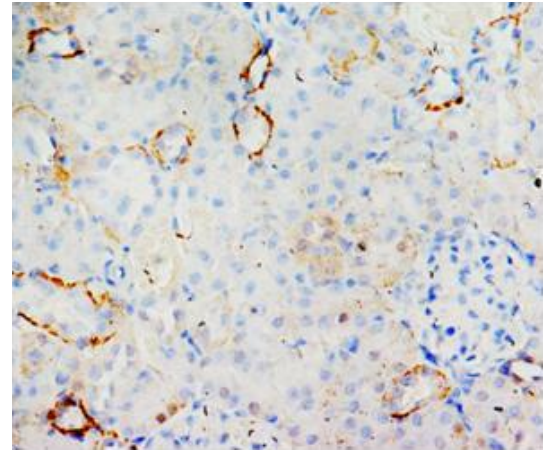


**AP23265PU-N****Polyclonal Antibody to MIF (C-term) - Aff - Purified**

<b>Alternate names:</b>	GLIF, Glycosylation-inhibiting factor, MMIF, Macrophage migration inhibitory factor, Phenylpyruvate tautomerase
<b>Quantity:</b>	0.1 mg
<b>Background:</b>	Macrophage migration inhibitory factor, MIF, is a cytokine released by T-lymphocytes, macrophages, and the pituitary gland that serves to integrate peripheral and central inflammatory responses. MIF gene has 3 exons separated by introns of only 189 and 95 bp, and covers less than 1 kb. Localization of the human gene for macrophage migration inhibitory factor (MIF) to chromosome 22q11.2 MIF plays a critical role in inflammatory diseases and atherogenesis.
<b>Uniprot ID:</b>	<a href="#">P14174</a>
<b>NCBI:</b>	<a href="#">NP_002406</a>
<b>GeneID:</b>	<a href="#">4282</a>
<b>Host / Isotype:</b>	Rabbit / IgG
<b>Immunogen:</b>	Synthetic peptide corresponding to a sequence at the C-terminal of human MIF <b>Remarks:</b> Sequence is different from the related rat and mouse sequence by single amino acid.
<b>Format:</b>	<b>State:</b> Lyophilized Ig fraction <b>Purification:</b> Immunogen affinity purified <b>Buffer System:</b> 5mg BSA, 0.9mg NaCl, 0.2mg Na <sub>2</sub> HPO <sub>4</sub> , 0.05mg Thimerosal, 0.05mg NaN <sub>3</sub> <b>Reconstitution:</b> 0.2ml of distilled water will yield a concentration of 500µg/ml.
<b>Applications:</b>	Western blot: At 1-2µg/ml with the appropriate system to detect MIF in cells and tissues. Immunohistochemistry on paraffin sections: At 1-2µg/ml to detect MIF in formalin fixed and paraffin embedded tissues. Other applications not tested. Optimal dilutions are dependent on conditions and should be determined by the user.
<b>Specificity:</b>	This antibody detects MIF at C-term. No cross reactivity with other proteins.
<b>Species Reactivity:</b>	<b>Tested:</b> Human, mouse, rat
<b>Storage:</b>	Store at 2 - 8 °C for up to one month or (in aliquots) at -20 °C for longer. Avoid repeated freezing and thawing. Shelf life: one year from despatch.

**Pictures:**

Immunohistochemical analysis of paraffin embedded rat kidney sections, staining MIF in cytoplasm, DAB chromogenic reaction



Western blot analysis of Mammary cancer tissue lysis using MIF antibody

