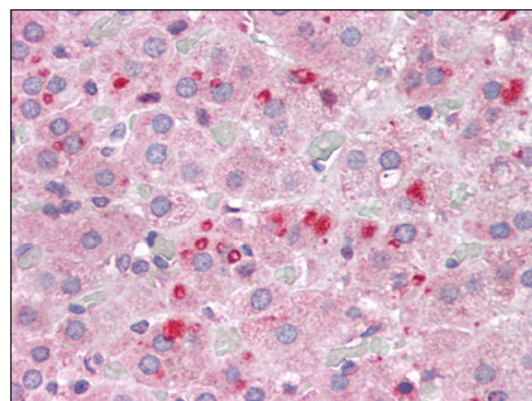
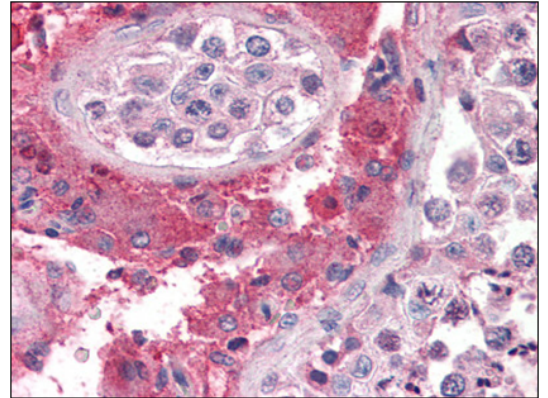


**AP23073PU-N****Polyclonal Antibody to SET / I2PP2A (N-term) - Purified**

<b>Alternate names:</b>	I-2PP2A, IGAAD, Inhibitor of granzyme A-activated DNase, PHAPII, Phosphatase 2A inhibitor I2PP2A, TAF-I, Template-activating factor I
<b>Quantity:</b>	50 µg
<b>Uniprot ID:</b>	<a href="#">H0UI37</a>
<b>NCBI:</b>	<a href="#">NP_001116293</a>
<b>GeneID:</b>	<a href="#">100130890</a>
<b>Host:</b>	Goat
<b>Immunogen:</b>	Synthetic peptide from N-terminus of human SET <b>AA Sequence:</b> SAPAAKVSKKELNS-C
<b>Format:</b>	<b>State:</b> Liquid Ig fraction <b>Purification:</b> Immunoaffinity Chromatography <b>Buffer System:</b> Tris saline buffer, pH 7.3, 0.5% BSA, 0.02% sodium azide
<b>Applications:</b>	<b>Immunohistochemistry on Paraffin Sections:</b> 3.75 µg/ml. <b>Western Blot:</b> 1 - 3 µg/ml. Other applications not tested. Optimal dilutions are dependent on conditions and should be determined by the user.
<b>Specificity:</b>	This antibody detects SET / I2PP2A (N-term).
<b>Species Reactivity:</b>	<b>Tested:</b> Human
<b>Storage:</b>	Store (in aliquots) at -20 °C. Dilute only prior to immediate use. Avoid repeated freezing and thawing. Shelf life: one year from despatch.
<b>Pictures:</b>	Adrenal, Human: Formalin-Fixed, Paraffin-Embedded (FFPE)



Testis, Human: Formalin-Fixed, Paraffin-Embedded (FFPE)



Antibody staining (2  $\mu\text{g}/\text{ml}$ ) of Human Kidney extracts (RIPA buffer, 35  $\mu\text{g}$  total protein per lane). Primary incubated for 1 hour. Detected by western blot using chemiluminescence.

