

AP22961PU-N**Polyclonal Antibody to Mitofusin-1 (745-756) - Aff - Purified****Alternate names:**

Fzo, MFN1, Transmembrane GTPase MFN1

Quantity:

50 µg

Concentration:

0.5 mg/ml

Background:

Essential transmembrane GTPase, which mediates mitochondrial fusion. Fusion of mitochondria occurs in many cell types and constitutes an important step in mitochondria morphology, which is balanced between fusion and fission. MFN1 acts independently of the cytoskeleton. Overexpression induces the formation of mitochondrial networks.

Uniprot ID:[Q8IWA4](#)**NCBI:**[NP_284941](#)**GeneID:**[55669](#)**Host:**

Goat

Immunogen:

MFN1 antibody was raised against synthetic peptide from an internal region of human MFN1 (NP_284941.2).

AA Sequence:

C-NKAVQLENELEN

Remarks: Percent identity by BLAST analysis: Human, Gibbon, Monkey, Marmoset, Elephant, Dog, Horse, Rabbit (100%); Gorilla, Mouse, Rat, Bovine (92%); Bat, Platypus (83%)

Format:**State:** Liquid purified Ig fraction**Purification:** Immunoaffinity Chromatography**Buffer System:** Tris saline buffer, pH 7.3 containing 0.5% BSA and 0.02% sodium azide**Applications:****Immunohistochemistry on Paraffin Sections:** 3.75 µg/ml.

Other applications not tested. Optimal dilutions are dependent on conditions and should be determined by the user.

Specificity:

This antibody reacts to an internal region of Mitofusin 1 (MFN1).

Species Reactivity:

Tested: Human, Gibbon, Monkey, Marmoset, Elephant, Dog, Horse, Rabbit, Gorilla, Mouse, Rat, Bovine, Bat, Platypus

Storage:

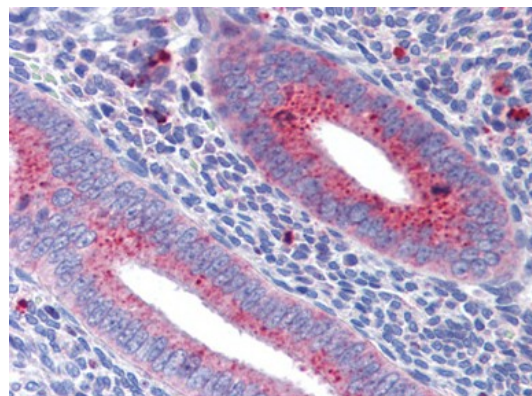
Store the antibody undiluted at 2-8°C for one month or (in aliquots) at -20°C for longer.

Avoid repeated freezing and thawing.

Shelf life: one year from despatch.

Pictures:

Uterus: Formalin-Fixed, Paraffin-Embedded (FFPE)



Adrenal, Human: Formalin-Fixed, Paraffin-Embedded (FFPE)

