

AP22684SU-N**Polyclonal Antibody to 14-3-3 protein eta (N-term) - Serum****Alternate names:**

Protein AS1, YWHA1, YWHAH

Quantity:

50 µl

Background:

It is a member of the 14-3-3 family which consists of 30 kD proteins that are involved in multiple protein kinase signalling pathways, regulation of cell cycle progression, cytoskeletal structure, transcription, intracellular trafficking and targeting. Protein interactions with 14-3-3 show distinct preference for its different isoforms and are regulated by phosphorylation of both 14-3-3 and the bound protein. 14-3-3 eta is expressed principally in the brain although it is expressed at low levels in other tissues. The protein binds alpha-synuclein, forming part of Lewy bodies in Parkinson's disease and has been linked to early-onset schizophrenia. The eta isoform binds both gremlin 1, which is overexpressed in human cancers, and the DAL-1/Protein 4.1B tumor suppressor. Furthermore the glucocorticoid receptor is positively regulated by 14-3-3- eta.

Uniprot ID:[Q04917](#)**NCBI:**[NP_003396](#)**GeneID:**[7533](#)**Host / Isotype:**

Rabbit / IgG

Immunogen:

Synthetic peptide corresponding to acetylated N-terminal sequence of sheep 14-3-3 eta.

Format:**State:** Liquid serum containing 0.09% sodium azide as preservative**Applications:****Immunohistochemistry on Paraffin Sections:** 1/250.*Histology Positive Control Tissue:* Normal brain tissue.**Western Blot.** Antibody Detects a band of approximately 30kD in HEK293 cell lysates. Other applications not tested. Optimal dilutions are dependent on conditions and should be determined by the user.**Specificity:**

This antibody recognizes 14-3-3 eta in all mammals.

May not react with recombinant proteins that are not N-acetylated.

Species Reactivity:**Tested:** Sheep.**Expected from sequence similarity:** Human, Mouse, Rat, Rabbit, Chicken and Bovine.**Storage:**

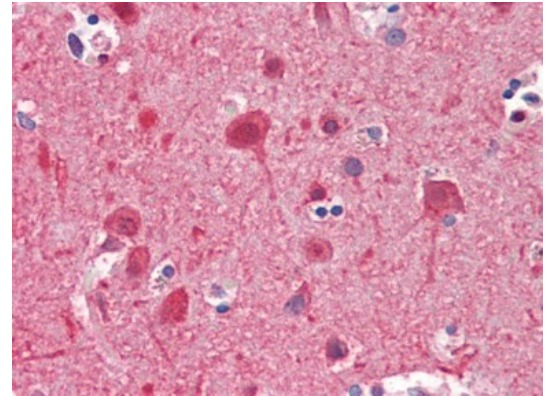
Store undiluted at 2-8°C for one month or (in aliquots) at -20°C for longer.

Avoid repeated freezing and thawing.

Shelf life: one year from despatch.

Pictures:

Human Brain, Cortex (formalin-fixed, paraffin-embedded) stained with YWHAH antibody AP22684SU-N at 1/250 followed by biotinylated goat anti-rabbit IgG secondary antibody, alkaline phosphatase-streptavidin and chromogen.



Human Brain, Cerebellum (formalin-fixed, paraffin-embedded) stained with YWHAH antibody AP22684SU-N at 1/250 followed by biotinylated goat anti-rabbit IgG secondary antibody, alkaline phosphatase-streptavidin and chromogen.

