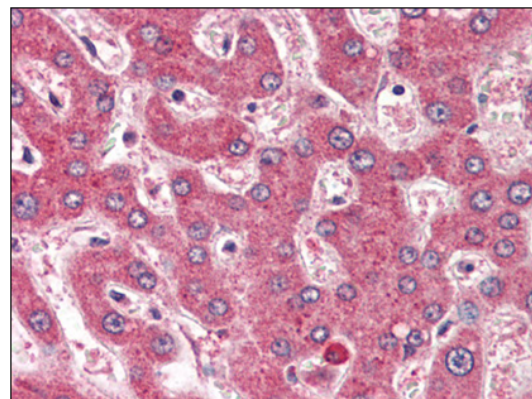


AP22501PU-N**Polyclonal Antibody to ROBO1 (994-1006) - Aff - Purified**

Alternate names:	DUTT1, Deleted in U Twenty Twenty, ROBO-1, Roundabout homolog 1
Quantity:	50 µg
Concentration:	0.5 mg/ml
Background:	Robo proteins are highly conserved transmembrane receptors that are expressed by growing axon tips. They play multiple parts in guiding axons to their correct locations in the developing brain and are particularly important for enabling axons to cross the midline. In all mammalian species studied so far, Robo is the receptor for Slit, a protein secreted by the midline of the nervous system. When bound to each other, Slit and Robo act as a chemorepellent, inducing growth of axon tips away from the midline.
Uniprot ID:	Q9Y6N7
NCBI:	NP_002932
GeneID:	6091
Host:	Goat
Immunogen:	Synthetic peptide from an internal region of human ROBO1 Genename: ROBO1 AA Sequence: C-GDVVLSNKKINEMK Remarks: Percent identity by BLAST analysis: Human, Gorilla, Gibbon, Monkey, Marmoset, Mouse, Rat, Hamster, Elephant, Panda, Bovine, Dog, Bat, Horse, Pig, Opossum, Turkey, Chicken, Lizard, Xenopus, Stickleback, Pufferfish (100%); Platypus, Zebrafish (92%)
Format:	State: Liquid Ig fraction Purification: Immunoaffinity chromatography Buffer System: Tris saline buffer, pH 7.3, 0.5% BSA, 0.02% sodium azide
Applications:	ELISA: 1/8000. Immunohistochemistry on Paraffin Sections: 2 µg/ml. Western Blot: 1 - 3 µg/ml. Other applications not tested. Optimal dilutions are dependent on conditions and should be determined by the user.
Specificity:	This antibody detects ROBO1 at aa 994-1006. It is expected to recognise all reported isoforms (NP_002932.1; NP_598334.1; NP_001139316.1; NP_001139317.1).
Species Reactivity:	Tested: Human, Gorilla, Gibbon, Monkey, Marmoset, Mouse, Rat, Hamster, Elephant, Panda, Bovine, Dog, Bat, Horse, Pig, Opossum, Turkey, Chicken, Lizard, Xenopus, Stickleback, Pufferfish, Platypus, Zebrafish

Storage: Store at 2 - 8 °C for up to three months or (in aliquots) at -20 °C for longer. Avoid repeated freezing and thawing.
Shelf life: one year from despatch.

Pictures: Human Liver (formalin-fixed, paraffin-embedded) stained with ROBO1 antibody AP22501PU-N at 2 µg/ml followed by biotinylated anti-goat IgG secondary antibody, alkaline phosphatase-streptavidin and chromogen.



Antibody (1 µg/ml) staining of HUVEC lysate (35 µg protein in RIPA buffer). Primary incubation was 1 hour. Detected by chemiluminescence.

