

Polyclonal Antibody to TLR7 4x Sampler Kit - Purified

Alternate names: Toll-like receptor 7

Catalog No.: AP22394PU-N

Quantity: 3x25µg + 50µl

Background: TLR7 is a highly conserved membrane protein belonging to the Toll-like receptor (TLR) family with 27 LRR (leucine-rich) repeats and a TIR domain. It plays a fundamental role in pathogen recognition and activation of innate immunity. TLR7 is activated by infections with single-stranded RNA viruses, including influenza virus and vesicular stomatitis virus (VSV). It is predominantly expressed in lung, placenta, and spleen, and lies in close proximity to another family member, TLR8. It acts via MyD88 and TRAF6, leading to NF-kappaB activation, cytokine secretion and the inflammatory response. They recognize pathogen-associated molecular patterns (PAMPs) that are expressed on infectious agents, and mediate the production of cytokines necessary for the development of effective immunity.

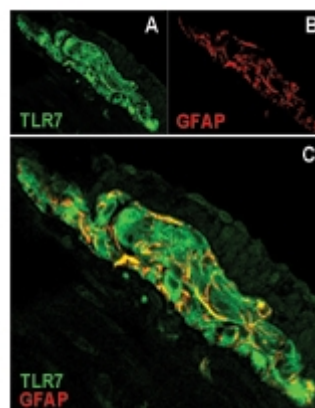
Host: Rabbit

Applications: **Western blot analysis.**
Flow Cytometry (Intracellular).
Immunoprecipitation.
Immunofluorescence/Immunocytochemistry.
Immunohistochemistry on Paraffin Sections.
Other applications not tested. Optimal dilutions are dependent on conditions and should be determined by the user.

Add. Information: TLR7 Screening Set contains 4 TLR7 Polyclonal Antibodies:
SP7200P-25: 50 µl TLR7 antibody
SP7198P-25: 25 µg TLR7 antibody
SP7199P-25: 25 µg TLR7 antibody
AP22295PU-25: 25 µg TLR7 antibody

Pictures:

Immunolocalization of TLR7 antibody (A, SP7198P) and glial fibrillary acidic protein (GFAP) (B) in murine myenteric plexus. Most of the GFAP positive cells were also positive for TLR7 in the merged image (C, yellow staining). *Courtesy of Barajon I, et al., Journal of Histochemistry & Cytochemistry, 57(11): 10131023, 2009.*



Intracellular Flow analysis of TLR7 in 10e6 ThP1 cells using 2 µg of SP7199P. Shaded histogram represents cells without antibody; green represents Isotype Control red represents TLR7 antibody. Intracellular Flow kit (10083K) was used for this test, and an anti-Rabbit IgG PE conjugated secondary.

