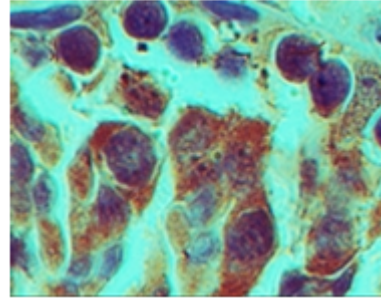


Polyclonal Antibody to RhoX-2 (1-21) - Serum

Catalog No.:	AP22167SU-N
Quantity:	0.1 ml
Background:	Reproductive homeobox on X chromosome 2, also known as Reproductive homeobox (RhoX) 2, is a recently identified nuclear protein product of a 12 X-linked novel RhoX family of homeobox-containing gene family members that plays an important role during postnatal testis development. The members of this family are characterized by a conserved 60-amino-acid DNA-binding homeodomain. These transcription factors not only play an important role in various developmental processes such as body-plan specification, pattern formation, and cell fate determination, but also in understanding the development and physiology of the human reproductive system.
Uniprot ID:	Q9D4Y3
NCBI:	NP_001078817.1
GeneID:	100040016
Host:	Rabbit
Immunogen:	Amino acids 1-21 of mouse RhoX-2 AA Sequence: CMERQSVNYKLDVGPPEEEDENA Remarks: The amino acid sequence used as immunogen is 100% homologous in mouse and 76% homologous in human, chimpanzee, monkey and rat
Format:	State: Liquid crude serum Buffer System: 50% glycerol and 0.025% sodium azide
Applications:	Immunohistochemistry on paraffin sections: 1:100. Western blot: 1:1000-1:3000. Other applications not tested. Optimal dilutions are dependent on conditions and should be determined by the user.
Specificity:	This antibody detects RhoX-2.
Species Reactivity:	Tested: Mouse Expected from sequence similarity: Chimpanzee, Human, New World monkey, Rat
Storage:	Store (in aliquots) at -20 °C. Avoid repeated freezing and thawing. Shelf life: one year from despatch.
General Readings:	1. Morris, L. et al. Mamm. Genome. 7:178-187 (2006). 2. Maclean, J. et al. Cell. 120:369-382 (2005).

Pictures:

Immunohistochemical analysis of Rhox-2 in formalin-fixed, paraffin-embedded mouse testis tissue using AP22167SU-N at 1:100.



Western blot analysis of mouse Rhox-2 in 18 day mouse testis lysate in the 1) absence and 2) presence of immunizing peptide using AP22167SU-N at 1:2500. Goat anti-rabbit Ig HRP secondary antibody and ECL substrate solution were used for this test.

