

**AP20818PU-N****Polyclonal Antibody to ABL1 / ABL2 pTyr393/439 - Aff - Purified****Alternate names:**

ABL1, ABL2, Abelson murine leukemia viral oncogene homolog 1, JTK7, Proto-oncogene tyrosine-protein kinase ABL1, bcr/abl, c-ABL, p150

**Quantity:**

0.1 mg

**Concentration:**

1.0 mg/ml

**Background:**

The Abl oncogene was initially identified as the viral transforming gene of Abelson murine leukemia virus (A-MuLV). The major translational product of c-Abl has been identified as a protein with tyrosine kinase activity and an SH2 domain. The Abl oncogene is implicated in several human leukemias including 90-95% of chronic myelocytic leukemia (CML), 20-25% of adult acute lymphoblastic leukemia (ALL) and 2-5% of pediatric ALL. In these leukemias the c-Abl protooncogene undergoes a (9;22) chromosomal translocation producing the Philadelphia (Ph1) chromosome. The molecular consequence of this translocation is the generation of a chimeric Bcr/c-Abl mRNA encoding activated Abl proteintyrosine kinase. The Bcr gene has been shown to encode a GTPase-activating protein (GAP) specific for the Ras-related GTP-binding protein, p21rac.

**Uniprot ID:**

[P00519](#)

**NCBI:**

[NP\\_005148](#)

**GeneID:**

[25](#)

**Host:**

Rabbit

**Immunogen:**

Synthetic phosphopeptide derived from human ABL1/2 around the phosphorylation site of Tyrosine 393/439.

**Format:**

**State:** Liquid purified Ig fraction (> 95% (by SDS-PAGE).  
**Purification:** Affinity Chromatography using epitope-specific immunogen.  
**Buffer System:** Phosphate buffered saline (PBS), pH~7.2  
**Preservatives:** 0.05% Sodium Azide

**Applications:**

**Western blot:** 1/500-1/1000.  
**Immunofluorescence:** 1/50-1/200.  
**Immunohistochemistry on Paraffin Sections:** 1/50-1/200.  
Other applications not tested. Optimal dilutions are dependent on conditions and should be determined by the user.

**Molecular Weight:**

~ 123 kDa

**Specificity:**

This antibody detects endogenous levels of ABL1/2 protein when phosphorylated at Tyr393/439.

**Species Reactivity:**

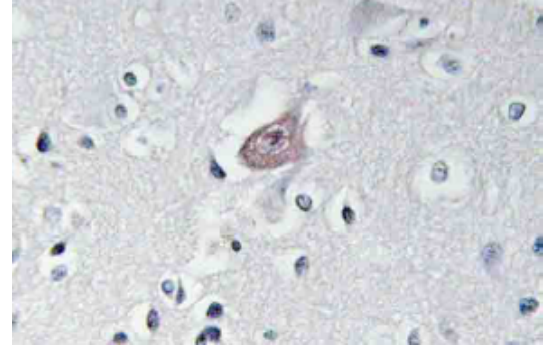
**Tested:** Human, Mouse, Rat.

**Storage:**

Store undiluted at 2-8°C for one month or (in aliquots) at -20°C for longer.  
Avoid repeated freezing and thawing.  
Shelf life: one year from despatch.

**Pictures:**

**Immunohistochemistry** analysis of p-Abl1/2 antibody (pTyr393/439) Cat.-No AP20818PU-N in paraffin-embedded human brain tissue.



**Western blot** analysis of p-Abl1/2 antibody (pTyr393/439) Cat.-No AP20818PU-N at 1/500 dilution: Lane 1: Hela cell lysate treated with colchicine. Lane 2: sp2/0 cell lysate treated with colchicine. Lane 3: H9C2 cell lysate treated with colchicine.

