

AP20539PU-N**Polyclonal Antibody to 14-3-3 protein gamma - Aff - Purified****Alternate names:**

KCIP-1, Protein kinase C inhibitor protein 1, YWHAG

Quantity:

0.1 mg

Concentration:

1.0 mg/ml

Background:

14-3-3 proteins regulate many cellular processes relevant to cancer biology, notably apoptosis, mitogenic signaling and cell-cycle checkpoints. Seven isoforms comprise this family of signaling intermediates, denoted 14-3-3 beta, gamma, epsilon, zeta, eta, theta and sigma. 14-3-3 proteins form dimers that present two binding sites for ligand proteins, thereby bringing together two proteins that may not otherwise associate. These ligands largely share a 14-3-3 consensus binding motif and exhibit serine/threonine phosphorylation. 14-3-3 proteins function in broad regulation of these ligand proteins, by cytoplasmic sequestration, occupation of interaction domains and import/export sequences, prevention of degradation, activation/repression of enzymatic activity and facilitation of protein modification, and thus loss of expression contributes to a vast array of pathogenic cellular activities.

Uniprot ID:[P61981](#)**NCBI:**[NP_036611](#)**GeneID:**[7532](#)**Host:**

Rabbit

Immunogen:Synthetic peptide, corresponding to amino acids 50-100 of Human 14-3-3 γ .**Format:****State:** Liquid purified Ig fraction (> 95% pure by SDS-PAGE)**Purification:** Affinity Chromatography using epitope-specific immunogen**Buffer System:** Phosphate Buffered Saline (PBS), pH~7.2**Preservatives:** 15 mM Sodium Azide**Applications:****Western blot:** 1/500-1/1000.**Immunofluorescence:** 1/50-1/200.**Immunohistochemistry on Paraffin Sections:** 1/50-1/200.

Other applications not tested. Optimal dilutions are dependent on conditions and should be determined by the user.

Molecular Weight:

~28 kDa

Specificity:This antibody detects endogenous levels of 14-3-3 gamma protein.
(region surrounding Met81)**Species Reactivity:****Tested:** Human.**Expected from sequence similarity:** Mouse and Rat.**Storage:**

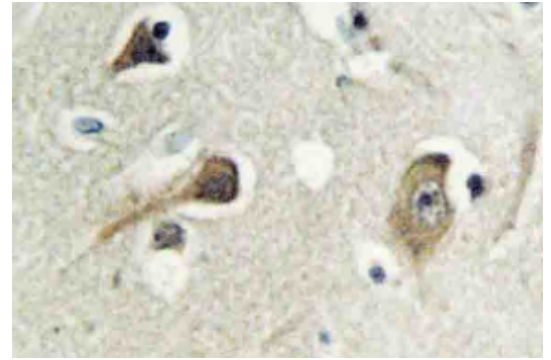
Store undiluted at 2-8°C for one month or (in aliquots) at -20°C for longer.

Avoid repeated freezing and thawing.

Shelf life: one year from despatch.

Pictures:

Immunohistochemistry (IHC) analyzes of 14-3-3 gamma antibody (Cat.-No.: AP20539PU-N) in paraffin-embedded human brain tissue.



Western blot analysis of 14-3-3 gamma Antibody (Cat.-No AP20539PU-N) in extracts from Hela cells at 1/500 dilution.

