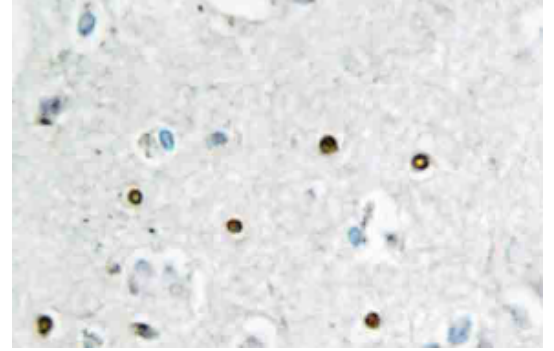


**AP20491PU-N****Polyclonal Antibody to MSH6 - Aff - Purified**

<b>Alternate names:</b>	DNA mismatch repair protein Msh6, G/T mismatch-binding protein, GTBP, MutS-alpha 160 kDa subunit, p160
<b>Quantity:</b>	0.1 mg
<b>Concentration:</b>	1.0 mg/ml
<b>Background:</b>	The finding that mutations in DNA mismatch repair genes are associated with hereditary nonpolyposis colorectal cancer (HNPCC) has resulted in considerable interest in the understanding of the mechanism of DNA mismatch repair. Initially, inherited mutations in the MSH2 and MLH1 homologs of the bacterial DNA mismatch repair genes MutS and MutL were demonstrated at high frequency in HNPCC and were shown to be associated with microsatellite instability. A member of the mismatch repair family, GTBP (also designated MSH6), is a 160 kDa MSH2-related protein that binds to DNA containing G/T mismatches. Findings suggest that the mismatch-binding factor in human cells is composed of a heterodimer of GTBP and MSH2.
<b>Uniprot ID:</b>	<a href="#">P52701</a>
<b>NCBI:</b>	<a href="#">NP_000170</a>
<b>GeneID:</b>	<a href="#">2956</a>
<b>Host:</b>	Rabbit
<b>Format:</b>	<b>State:</b> Liquid purified Ig fraction <b>Purification:</b> Affinity chromatography (> 95% (by SDS-PAGE) <b>Buffer System:</b> Phosphate buffered saline (PBS), pH 7.2. <b>Preservatives:</b> 0.05% sodium azide
<b>Applications:</b>	<b>Western blot:</b> 1/500 - 1/1000. <b>Immunohistochemistry on paraffin sections:</b> 1/50 - 1/200. <b>Immunofluorescence:</b> 1/50 - 1/200. Other applications not tested. Optimal dilutions are dependent on conditions and should be determined by the user.
<b>Molecular Weight:</b>	~ 153 kDa
<b>Specificity:</b>	This antibody detects endogenous levels of GTBP protein. (region surrounding Glu371)
<b>Species Reactivity:</b>	<b>Tested:</b> Human and Mouse.
<b>Storage:</b>	Store undiluted at 2-8°C for one month or (in aliquots) at -20°C for longer. Avoid repeated freezing and thawing. Shelf life: one year from despatch.

**Pictures:**

**Immunohistochemistry (IHC)** analyzes of GTBP antibody (Cat.-No.: AP20491PU-N) in paraffin-embedded human brain tissue.



**Western blot (WB)** analysis of GTBP antibody (Cat.-No.: AP20491PU-N) in extracts from HUVEC cells.

