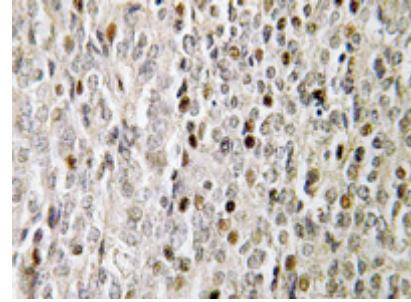


AP20439PU-N**Polyclonal Antibody to FOXE3 / FKHL12 - Aff - Purified**

Alternate names:	FREAC8, Forkhead box protein E3, Forkhead-related protein FKHL12, Forkhead-related transcription factor 8
Quantity:	0.1 mg
Concentration:	1.0 mg/ml
Background:	The human forkhead-box (FOX) gene family consists of at least 43 members, including FOXE3, a 288-amino acid protein. FOXE3 is a winged-helix transcription factor that plays a crucial role during the initial stages of lens development and closure of the lens vesicle. FOXE3 may also act as a factor that promotes survival and proliferation while preventing differentiation in the lens epithelium. As the posterior cells of the lens fiber begin to differentiate, expression of FOXE3 is limited to the undifferentiated cells coating the anterior surface of the lens. Congenital primary aphakia (CPA) is a rare developmental disorder caused by a null mutation in the FOXE3 gene that is identified by the absence of a lens. The development of CPA is normally stimulated during the fourth or fifth week of human embryogenesis.
Uniprot ID:	Q13461
NCBI:	NP_036318
GeneID:	2301
Host:	Rabbit
Format:	State: Liquid purified Ig fraction Purification: Affinity chromatography (> 95% (by SDS-PAGE) Buffer System: Phosphate buffered saline (PBS) with 0.05% Sodium azide, approx. pH 7.2.
Applications:	Immunohistochemistry on Paraffin sections: 1/50-1/200. Western Blot: 1/500-1/1000. Other applications not tested. Optimal dilutions are dependent on conditions and should be determined by the user.
Molecular Weight:	~ 33 kDa
Specificity:	This antibody detects endogenous levels of FOXE3 protein. (region surrounding Arg97)
Species Reactivity:	Tested: Human. Expected from sequence similarity: Mouse and Rat.
Storage:	Store the antibody undiluted at 2-8°C for one month or (in aliquots) at -20°C for longer. Avoid repeated freezing and thawing. Shelf life: one year from despatch.

Pictures:

Immunohistochemistry analyses of FOXE3 in human prostate carcinoma tissue (Formalin-fixed, Paraffin-embedded) using FOXE3 / FKHL12 antibody (Cat.-No. AP20439PU-N).



Western blot analysis of FOXE3 in extracts from K562 cell using FOXE3 / FKHL12 antibody (Cat.-No. AP20439PU-N.)

