

AP20292PU-N**Polyclonal Antibody to Bcl-2-like 8 - Aff - Purified****Alternate names:**

BAD, BBC6, BCL2L8, Bcl-2-binding component 6, Bcl-2-like protein 8, Bcl-XL/Bcl-2-associated death promoter, Bcl2 antagonist of cell death, Bcl2-L-8

Quantity:

0.1 mg

Concentration:

1.0 mg/ml

Background:

Bad is a member of the Bcl2 family and acts to promote apoptosis by forming heterodimers with the survival proteins Bcl2 and BclxL, thus preventing them from binding with BAX. Bad is found on the outer mitochondrial membrane and, once phosphorylated in response to growth stimuli, translocates to the cytoplasm. The phosphorylation status of Bad represents a key checkpoint for death or cell survival. JNK-induced phosphorylation of BAD serine 128 promotes the apoptotic role of Bad by opposing the inhibitory effect of growth factor on Bad-mediated apoptosis. Cdc2-induced phosphorylation of Bad serine 128 has an inhibitory effect on its interaction with 14-3-3 proteins. The latter interaction is critical for Bad phosphorylation at serine 155, a site within the BH3 domain that leads to the release of BclxL and the promotion of cell survival. Alternative splicing of this gene results in two transcript variants which encode the same isoform.

Uniprot ID:

[Q92934](#)

NCBI:

[NP_004313](#)

GenID:

[572](#)

Host:

Rabbit

Format:

State: Liquid purified Ig fraction

Purification: Affinity-chromatography using epitope-specific immunogen; purity is > 95% (by SDS-PAGE)

Buffer System: Phosphate buffered saline (PBS) with 0.05% sodium azide, approx. pH 7.2

Applications:

Western blot: 1/500-1/1000.

Immunohistochemistry on paraffin sections: 1/50-1/200.

Immunofluorescence: 1/50-1/200.

Other applications not tested. Optimal dilutions are dependent on conditions and should be determined by the user.

Molecular Weight:

~ 24 kDa

Specificity:

This antibody detects endogenous levels of BAD protein.

Species Reactivity:

Tested: Human.

Expected from sequence similarity: Mouse and Rat.

Storage:

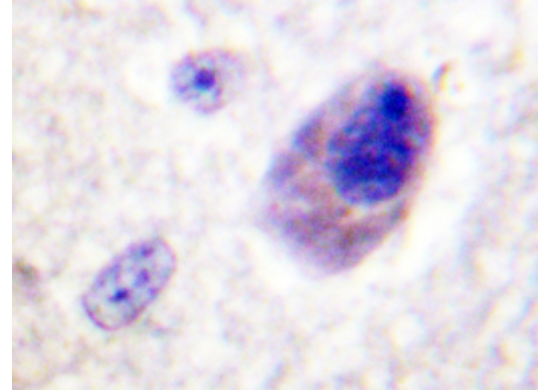
Store undiluted at 2-8°C for one month or (in aliquots) at -20°C for longer.

Avoid repeated freezing and thawing.

Shelf life: one year from despatch.

Pictures:

Immunohistochemistry analyzes of BAD antibody (AP20292PU-N) in paraffin-embedded human brain tissue.



Western blot analysis of BAD antibody (AP20292PU-N) in extracts from NIH/3T3 cells.

