

AP17686PU-N**Polyclonal Antibody to PSME2 / REG-beta (C-term)****Alternate names:**

11S regulator complex subunit beta, Activator of multicatalytic protease subunit 2, PA28b, PA28beta, Proteasome activator, Proteasome activator 28 subunit beta, Proteasome activator complex subunit 2

Quantity:

0.4 ml

Concentration:

lot specific

Background:

The 26S proteasome is a multicatalytic proteinase complex with a highly ordered structure composed of 2 complexes, a 20S core and a 19S regulator. The 20S core is composed of 4 rings of 28 non-identical subunits; 2 rings are composed of 7 alpha subunits and 2 rings are composed of 7 beta subunits. The 19S regulator is composed of a base, which contains 6 ATPase subunits and 2 non-ATPase subunits, and a lid, which contains up to 10 non-ATPase subunits. Proteasomes are distributed throughout eukaryotic cells at a high concentration and cleave peptides in an ATP/ubiquitin-dependent process in a non-lysosomal pathway. An essential function of a modified proteasome, the immunoproteasome, is the processing of class I MHC peptides. The immunoproteasome contains an alternate regulator, referred to as the 11S regulator or PA28, that replaces the 19S regulator. Three subunits (alpha, beta and gamma) of the 11S regulator have been identified. PSME2 is the beta subunit of the 11S regulator, one of the two 11S subunits that is induced by gamma-interferon.

Uniprot ID:

[Q9UL46](#)

NCBI:

[NP_002809](#)

GeneID:

[5721](#)

Host:

Rabbit

Immunogen:

KLH conjugated synthetic peptide selected from the C-terminal region of human PSME2

Format:

State: Liquid purified Ig

Purification: Saturated Ammonium Sulfate (SAS) precipitation

Buffer System: PBS with 0.09% (W/V) sodium azide

Applications:

ELISA: 1/1,000.

Western blotting: 1/50 - 1/100.

Immunohistochemistry on Paraffin embedded sections 1/50 - 1/100

Other applications not tested. Optimal dilutions are dependent on conditions and should be determined by the user.

Specificity:

This antibody reacts to PSME2.

Species: Human, Mouse.

Other species not tested.

Storage:

Store the antibody undiluted at 2-8°C for one month or (in aliquots) at -20°C for longer.

Avoid repeated freezing and thawing.

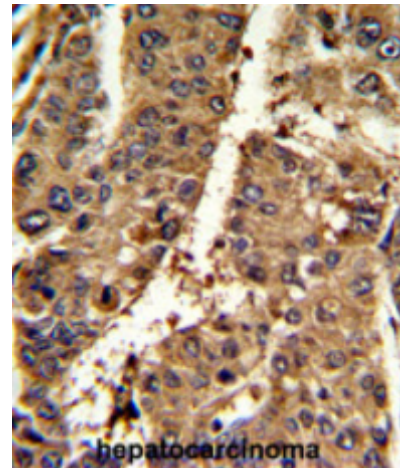
Shelf life: one year from despatch.

General Readings:

1. Conticello, S.G., *Curr. Biol.* 13 (22), 2009-2013 (2003)

Pictures:

Formalin-fixed and paraffin-embedded mouse hepatocarcinoma reacted with AP17686PU-N PSME2 Antibody (C-term), which was peroxidase-conjugated to the secondary antibody



Western blot analysis of PSME2 antibody (C-term) (AP17686PU-N) in mouse lung tissue lysates (35ug/lane). PSME2 (arrow) was detected using the purified Pab.

