

AP15297PU-N**Polyclonal Antibody to PPP3CC / CALNA3 (C-term) - Purified****Alternate names:**

CAM-PRP catalytic subunit, CNA3, Calcineurin testis-specific catalytic subunit, Calmodulin-dependent calcineurin A subunit gamma isoform, Serine/threonine-protein phosphatase 2B catalytic subunit gamma isoform, protein phosphatase 2B catalytic subunit gamma

Quantity:

0.4 ml

Concentration:

lot specific

Background:

Calmodulin-dependent protein phosphatase, calcineurin, is involved in a wide range of biologic activities, acting as a Ca(2+)-dependent modifier of phosphorylation status. In testis, the motility of the sperm is thought to be controlled by cAMP-dependent phosphorylation and a unique form of calcineurin appears to be associated with the flagellum. The calcineurin holoenzyme is composed of catalytic and regulatory subunits of 60 and 18 kD, respectively. At least 3 genes, calcineurin A-alpha, calcineurin A-beta, and calcineurin A-gamma, have been cloned for the catalytic subunit. These genes have been identified in humans, mice, and rats, and are highly conserved between species (90 to 95% amino acid identity).

Uniprot ID:[P48454](#)**NCBI:**[NP_005596.2](#)**GeneID:**[5533](#)**Host / Isotype:**

Rabbit / Ig

Immunogen:

KLH conjugated synthetic peptide between 480~509 amino acids from the C-terminal region of Human PPP3CC.

Format:**State:** Liquid purified Ig fraction.**Purification:** Prepared by Saturated Ammonium Sulfate (SAS) precipitation followed by dialysis against PBS**Buffer System:** PBS with 0.09% (W/V) Sodium Azide as preservative.**Applications:**

ELISA: 1/1,000.

Western blotting: 1/100-1/500.

Immunohistochemistry: 1/50-1/100.

Other applications not tested. Optimal dilutions are dependent on conditions and should be determined by the user.

Specificity:

This antibody recognizes PPP3CC.

Species Reactivity:**Tested:** Human.**Storage:**

Store the antibody undiluted at 2-8°C for one month or (in aliquots) at -20°C for longer.

Avoid repeated freezing and thawing.

Shelf life: one year from despatch.

Caution:

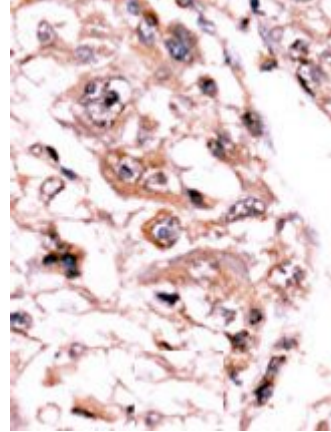
This product is for research use only. Not for use in diagnostic or therapeutic procedures.

General Readings:

1. Eastwood, S.L., et al., Biol. Psychiatry 57(7):702-710 (2005).
2. Gerber, D.J., et al., Proc. Natl. Acad. Sci. U.S.A. 100(15):8993-8998 (2003).
3. Bennasser, Y., et al., Virology 303(1):174-180 (2002).
4. Esau, C., et al., J. Exp. Med. 194(10):1449-1459 (2001).
5. Muramatsu, T., et al., Biochem. Biophys. Res. Commun. 188(1):265-271 (1992).

Pictures:

Immunohistochemistry: AP15297PU-N PPP3CC antibody staining of Formalin-Fixed Paraffin-Embedded Human cancer tissue, followed by peroxidase conjugated secondary antibody and AEC staining.



Western Blot analysis: AP15297PU-N PPP3CC antibody staining of A375 cell line lysate.

