

## AP15164PU-N

## Polyclonal Antibody to uPA / PLAU (N-term) - Purified

### Alternate names:

U-plasminogen activator, Urokinase, Urokinase-type plasminogen activator, Urokinase-type plasminogen activator chain B, Urokinase-type plasminogen activator long chain A, Urokinase-type plasminogen activator short chain A

### Quantity:

0.4 ml

### Concentration:

0.25 mg/ml

### Background:

PLAU, a member of the peptidase family S1, is a potent plasminogen activator and is clinically used for therapy of thrombolytic disorders. PLAU specifically cleaves the Arg|-Val bond in plasminogen to form plasmin. The protein is found in high and low molecular mass forms. Each consists of two chains, A and B. The high molecular mass form contains a long chain A. Cleavage occurs after residue 155 in the low molecular mass form to yield a short A1 chain. The protein is used in Pulmonary Embolism (PE) to initiate fibrinolysis. Structurally, PLAU contains 1 EGF-like domain and 1 kringle domain.

### Uniprot ID:

[P00749](#)

### NCBI:

[9606](#)

### GenelD:

[5328](#)

### Host / Isotype:

Rabbit / Ig

### Immunogen:

This antibody is generated from rabbits immunized with a KLH conjugated synthetic peptide between aa 68-98 from the N-terminal region of human PLAU.

### Format:

**State:** Liquid purified Ig fraction.

**Purification:** Protein G Chromatography, eluted with high and low pH buffers and neutralized immediately, followed by dialysis against PBS

**Buffer System:** PBS with 0.09% (W/V) Sodium Azide as preservative.

### Applications:

ELISA: 1/1,000.

Western blotting: 1/100-1/500.

Immunohistochemistry: 1/50-1/100.

Other applications not tested. Optimal dilutions are dependent on conditions and should be determined by the user.

### Specificity:

This antibody recognizes Urokinase/PLAU (N-term).

**Species:** Human and Mouse.

Other species not tested.

### Add. Information:

**Calculated MW:** 48525 Da

### Storage:

Store the antibody undiluted at 2-8°C for one month or (in aliquots) at -20°C for longer.

Avoid repeated freezing and thawing.

Shelf life: one year from despatch.

### Caution:

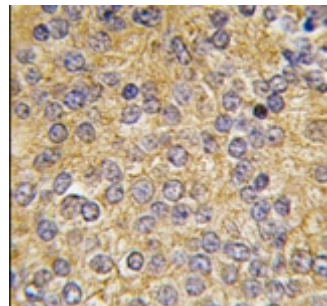
This product is for research use only. Not for use in diagnostic or therapeutic procedures.

**General Readings:**

1. Strausberg, R.L., et al., Proc. Natl. Acad. Sci. U.S.A. 99(26):16899-16903 (2002).
2. Sperl, S., et al., Proc. Natl. Acad. Sci. U.S.A. 97(10):5113-5118 (2000).
3. Turkmen, B., et al., Electrophoresis 18(5):686-689 (1997).
4. Conne, B., et al., Thromb. Haemost. 77(3):434-435 (1997).
5. Yoshimoto, M., et al., Biochim. Biophys. Acta 1293(1):83-89 (1996).

**Pictures:**

Formalin-fixed and paraffin-embedded human prostata carcinoma tissue reacted with PLAU antibody (N-term), which was peroxidase-conjugated to the secondary antibody, followed by DAB staining.



(LEFT)Western blot analysis of anti-PLAU Antibody (N-term) in A2058 cell line lysates (35ug/lane). PLAU (arrow) was detected using the purified Pab.  
(RIGHT)Western blot analysis of anti-PLAU Antibody (N-term) in mouse brain tissue lysates (35ug/lane). PLAU (arrow) was detected using the purified Pab

