

**AP14609PU-N****Polyclonal Antibody to ACVRL1 / ALK1 (C-term) - Purified****Alternate names:**

ACVRLK1, Activin A receptor type II-like 1, Activin receptor-like kinase 1, SKR3, Serine/threonine-protein kinase receptor R3, TGF-B superfamily receptor type I

**Quantity:**

0.4 ml

**Concentration:**

lot specific

**Background:**

ACVRL1 is a type I cell-surface receptor for the TGF-beta superfamily of ligands. It shares with other type I receptors a high degree of similarity in serine-threonine kinase subdomains, a glycine- and serine-rich region (called the GS domain) preceding the kinase domain, and a short C-terminal tail. This protein, sometimes termed ALK1, shares similar domain structures with other closely related ALK or activin receptor-like kinase proteins that form a subfamily of receptor serine/threonine kinases. Mutations in this gene are associated with hemorrhagic telangiectasia type 2, also known as Rendu-Osler-Weber syndrome 2.

**Uniprot ID:**

[P37023](#)

**NCBI:**

[9606](#)

**GenelD:**

[94](#)

**Host / Isotype:**

Rabbit / Ig

**Immunogen:**

This antibody is generated from rabbits immunized with a KLH conjugated synthetic peptide selected from the C-terminal region of human ACVRL1.

**Format:**

**State:** Liquid purified Ig fraction.

**Purification:** Protein G Chromatography, eluted with high and low pH buffers and neutralized immediately, followed by dialysis against PBS

**Buffer System:** PBS with 0.09% (W/V) sodium azide

**Applications:**

ELISA: 1/1,000.

Western blotting: 1/100-1/500.

Immunohistochemistry: 1/50-1/100.

Other applications not tested. Optimal dilutions are dependent on conditions and should be determined by the user.

**Specificity:**

This antibody recognizes ACVRL1.

**Species:** Human.

Other species not tested.

**Add. Information:**

**Calculated MW:** 56124 Da

**Storage:**

Store the antibody undiluted at 2-8°C for one month or (in aliquots) at -20°C for longer.

Avoid repeated freezing and thawing.

Shelf life: one year from despatch.

**Caution:**

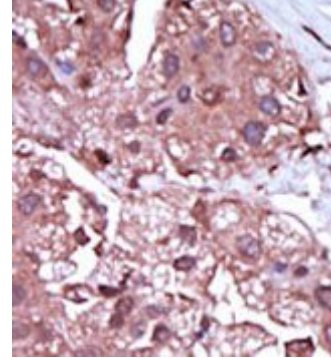
This product is for research use only. Not for use in diagnostic or therapeutic procedures.

**General Readings:**

1. Strausberg, R.L., et al., Proc. Natl. Acad. Sci. U.S.A. 99(26):16899-16903 (2002).
2. Berg, J.N., et al., Am. J. Hum. Genet. 61(1):60-67 (1997).
3. Johnson, D.W., et al., Nat. Genet. 13(2):189-195 (1996).
4. ten Dijke, P., et al., Oncogene 8(10):2879-2887 (1993).
5. Attisano, L., et al., Cell 75(4):671-680 (1993).

**Pictures:**

Formalin-fixed and paraffin-embedded human cancer tissue reacted with the primary antibody, which was peroxidase-conjugated to the secondary antibody, followed by DAB staining.



Western blot analysis of anti-ACVRL1 Antibody (C-term) in Jurkat cell line lysates (35ug/lane). ACVRL1 (arrow) was detected using the purified Pab.

