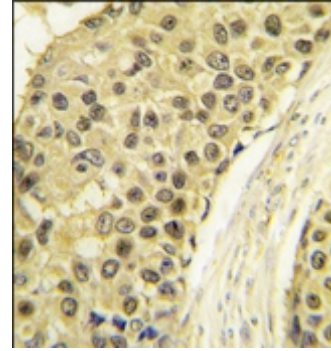


AP14029PU-N**Polyclonal Antibody to Cyclin A2 (C-term) - Purified**

Alternate names:	CCN1, CCNA, CCNA2, Cyclin A, Cyclin-A2
Quantity:	0.4 ml
Concentration:	lot specific
Background:	CCNA2 belongs to the highly conserved cyclin family, whose members are characterized by a dramatic periodicity in protein abundance through the cell cycle. Cyclins function as regulators of CDK kinases. Different cyclins exhibit distinct expression and degradation patterns which contribute to the temporal coordination of each mitotic event. In contrast to cyclin A1, which is present only in germ cells, this cyclin is expressed in all tissues tested. This cyclin binds and activates CDC2 or CDK2 kinases, and thus promotes both cell cycle G1/S and G2/M transitions.
Uniprot ID:	P20248
NCBI:	9606
GeneID:	890
Host / Isotype:	Rabbit / Ig
Immunogen:	This antibody is generated from rabbits immunized with a KLH conjugated synthetic peptide selected from the C-terminal region of human CCNA2.
Format:	State: Liquid purified Ig Purification: Prepared by Saturated Ammonium Sulfate (SAS) precipitation followed by dialysis against PBS Buffer System: PBS with 0.09% (W/V) sodium azide
Applications:	ELISA: 1/1,000. Western Blot. Immunohistochemistry: 1/10 - 1/50. Other applications not tested. Optimal dilutions are dependent on conditions and should be determined by the user.
Specificity:	This antibody reacts to CCNA2. Species: Human. Other species not tested.
Storage:	Store the antibody undiluted at 2-8°C for one month or (in aliquots) at -20°C for longer. Avoid repeated freezing and thawing. Shelf life: one year from despatch.
Caution:	This product is for research use only. Not for use in diagnostic or therapeutic procedures.
General Readings:	1. Henglein B., Proc. Natl. Acad. Sci. U.S.A. 91:5490-5494(1994) 2. Wang J., Nature 343:555-557(1990) 3. Tsang, W.Y., J. Cell Biol. 178 (4), 621-633 (2007)

Pictures:

Formalin-fixed and paraffin-embedded human breast carcinoma tissue reacted with CCNA2 antibody (C-term), which was peroxidase-conjugated to the secondary antibody, followed by DAB staining.



Western blot analysis of CCNA2 (arrow) using rabbit polyclonal CCNA2 Antibody (C-term). 293 cell lysates (2 ug/lane) either nontransfected (Lane 1) or transiently transfected with the CCNA2 gene (Lane 2)

